

TMX1 Polyclonal Antibody

catalog number: E-AB-65154

Note: Centrifuge before opening to ensure complete recovery of vial contents.

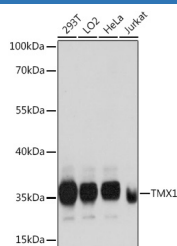
Description

Reactivity	Human;Mouse;Rat
Immunogen	Recombinant fusion protein of human TMX1 (NP_110382.3).
Host	Rabbit
Isotype	IgG
Purification	Affinity purification
Buffer	Phosphate buffered solution, pH 7.4, containing 0.05% stabilizer and 50% glycerol.

Applications Recommended Dilution

WB	1:500-1:2000
IHC	1:50-1:200

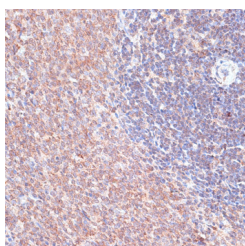
Data



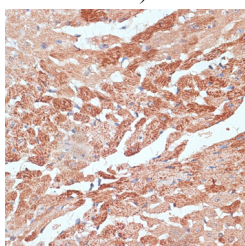
Western blot analysis of extracts of various cell lines using TMX1 Polyclonal Antibody at dilution of 1:1000.

Observed-MW:35 kDa

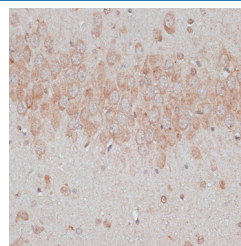
Calculated-MW:31 kDa



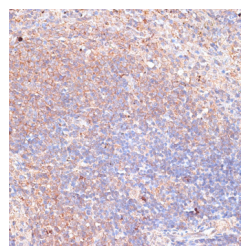
Immunohistochemistry of paraffin-embedded Rat spleen using TMX1 Polyclonal Antibody at dilution of 1:100 (40x lens).



Immunohistochemistry of paraffin-embedded Mouse heart using TMX1 Polyclonal Antibody at dilution of 1:100 (40x lens).



Immunohistochemistry of paraffin-embedded Rat brain using TMX1 Polyclonal Antibody at dilution of 1:100 (40x lens).



Immunohistochemistry of paraffin-embedded Mouse spleen using TMX1 Polyclonal Antibody at dilution of 1:100 (40x lens).

For Research Use Only

Preparation & Storage

Storage

Store at -20°C Valid for 12 months. Avoid freeze / thaw cycles.

Shipping

The product is shipped with ice pack, upon receipt, store it immediately at the temperature recommended.

Background

This gene encodes a member of the disulfide isomerase (PDI) family of endoplasmic reticulum (ER) proteins that catalyze protein folding and thiol-disulfide interchange reactions. The encoded protein has an N-terminal ER-signal sequence, a catalytically active thioredoxin domain, and one transmembrane domain. Unlike most members of this gene family, it lacks a C-terminal ER-retention sequence. The mature membrane-bound protein can both oxidize and reduce disulfide bonds and acts selectively on membrane-associated polypeptides.

For Research Use Only