

HEBP1 Polyclonal Antibody

catalog number: **E-AB-18070**

Note: Centrifuge before opening to ensure complete recovery of vial contents.

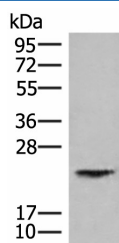
Description

Reactivity	Human
Immunogen	Synthetic peptide of human HEBP1
Host	Rabbit
Isotype	IgG
Purification	Antigen affinity purification
Buffer	Phosphate buffered solution, pH 7.4, containing 0.05% stabilizer and 50% glycerol.

Applications

Applications	Recommended Dilution
WB	1:500-1:2000
IHC	1:50-1:300

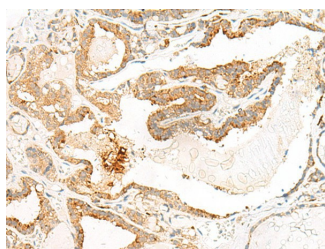
Data



Western blot analysis of Human kidney tissue lysate using HEBP1 Polyclonal Antibody at dilution of 1:750

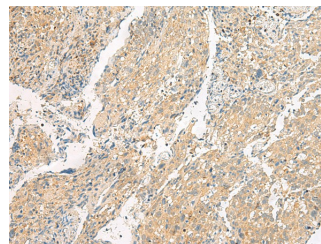
Observed-MW: Refer to figures

Calculated-MW: 21 kDa



Immunohistochemistry of paraffin-embedded Human thyroid cancer tissue using HEBP1 Polyclonal Antibody at dilution of

1:60 (x200)



Immunohistochemistry of paraffin-embedded Human cervical cancer tissue using HEBP1 Polyclonal Antibody at dilution of 1:60 (x200)

Preparation & Storage

Storage	Store at -20°C Valid for 12 months. Avoid freeze / thaw cycles.
Shipping	The product is shipped with ice pack, upon receipt, store it immediately at the temperature recommended.

Background

The full-length protein encoded by this gene is an intracellular tetrapyrrole-binding protein. This protein includes a natural chemoattractant peptide of 21 amino acids at the N-terminus, which is a natural ligand for formyl peptide receptor-like receptor 2 (FPRL2) and promotes calcium mobilization and chemotaxis in monocytes and dendritic cells.

For Research Use Only