

DRD3 Polyclonal Antibody

catalog number: **E-AB-65054**

Note: Centrifuge before opening to ensure complete recovery of vial contents.

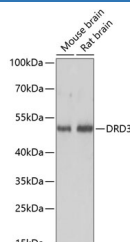
Description

Reactivity	Mouse;Rat
Immunogen	A synthetic peptide of human DRD3 (NP_000787.2).
Host	Rabbit
Isotype	IgG
Purification	Affinity purification
Buffer	Phosphate buffered solution, pH 7.4, containing 0.05% stabilizer and 50% glycerol.

Applications Recommended Dilution

WB	1:500-1:2000
-----------	--------------

Data



Western blot analysis of extracts of various cell lines using
DRD3 Polyclonal Antibody at dilution of 1:3000.

Observed-MW:44 kDa

Calculated-MW:40 kDa/44 kDa

Preparation & Storage

Storage	Store at -20°C Valid for 12 months. Avoid freeze / thaw cycles.
Shipping	The product is shipped with ice pack, upon receipt, store it immediately at the temperature recommended.

Background

This gene encodes the D3 subtype of the five (D1-D5) dopamine receptors. The activity of the D3 subtype receptor is mediated by G proteins which inhibit adenylyl cyclase. This receptor is localized to the limbic areas of the brain, which are associated with cognitive, emotional, and endocrine functions. Genetic variation in this gene may be associated with susceptibility to hereditary essential tremor 1. Alternative splicing of this gene results in transcript variants encoding different isoforms, although some variants may be subject to nonsense-mediated decay (NMD).

For Research Use Only