

CD272 Polyclonal Antibody

Catalog Number: E-AB-14847



Note: Centrifuge before opening to ensure complete recovery of vial contents.

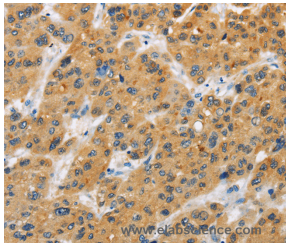
Description

Reactivity	Human
Immunogen	Recombinant protein of human BTLA
Host	Rabbit
Isotype	IgG
Purification	Affinity purification
Conjugation	Unconjugated
Formulation	PBS with 0.05% sodium azide and 50% glycerol, PH7.4

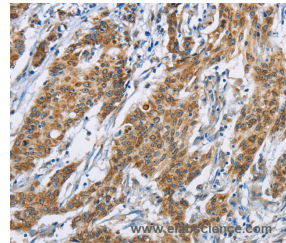
Applications Recommended Dilution

IHC	1:25-1:100
------------	------------

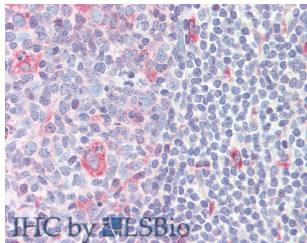
Data



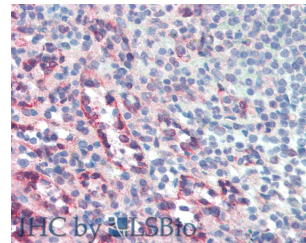
Immunohistochemistry of paraffin-embedded Human liver cancer tissue using CD272 Polyclonal Antibody at dilution 1:30



Immunohistochemistry of paraffin-embedded Human gastric cancer tissue using CD272 Polyclonal Antibody at dilution 1:30



Immunohistochemistry of paraffin-embedded Small Intestine (MALT) tissue using CD272 Polyclonal Antibody at dilution of 1:50 (Elabscience® Product Detected by Lifespan).



Immunohistochemistry of paraffin-embedded Small Intestine (MALT) tissue using CD272 Polyclonal Antibody at dilution of 1:50 (Elabscience® Product Detected by Lifespan).

Preparation & Storage

Storage Store at -20°C. Avoid freeze / thaw cycles.

Background

This gene encodes a member of the immunoglobulin superfamily. The encoded protein contains a single immunoglobulin (Ig) domain and is a receptor that relays inhibitory signals to suppress the immune response. Alternative splicing results in multiple transcript variants. Polymorphisms in this gene have been associated with an increased risk of rheumatoid arthritis.

For Research Use Only

A Reliable Research Partner in Life Science and Medicine

Toll-free: 1-888-852-8623

Web: www.elabscience.com

Tel: 1-832-243-6086

Email: techsupport@elabscience.com

Fax: 1-832-243-6017