

Recombinant Cynomolgus CRTAM/CD355 Protein (His Tag)

Catalog Number: PKSQ050013

Note: Centrifuge before opening to ensure complete recovery of vial contents.

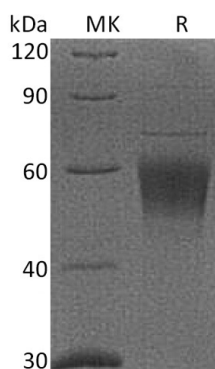
Description

Species	Cynomolgus macaques
Source	HEK293 Cells-derived Cynomolgus macaques CRTAM/CD355 protein Ser18-Gly287, with an C-terminal His
Calculated MW	30.8 kDa
Observed MW	50-60 kDa
Accession	XP_005580021.1
Bio-activity	Not validated for activity

Properties

Purity	> 95 % as determined by reducing SDS-PAGE.
Endotoxin	< 1.0 EU per µg of the protein as determined by the LAL method.
Storage	Generally, lyophilized proteins are stable for up to 12 months when stored at -20 to -80 °C. Reconstituted protein solution can be stored at 4-8°C for 2-7 days. Aliquots of reconstituted samples are stable at < -20°C for 3 months.
Shipping	This product is provided as lyophilized powder which is shipped with ice packs.
Formulation	Lyophilized from a 0.2 µm filtered solution of PBS, pH 7.4. Normally 5% - 8% trehalose, mannitol and 0.01% Tween 80 are added as protectants before lyophilization.
Reconstitution	Please refer to the specific buffer information in the printed manual. Please refer to the printed manual for detailed information.

Data



> 95 % as determined by reducing SDS-PAGE.

Background

Cytotoxic and Regulatory T-Cell Molecule (CRTAM) is a member of Nectin family under the immunoglobulin superfamily that is expressed by activated CD8⁺ and NK T cells. CRTAM is found in spleen, thymus, small intestine, peripheral blood, and it is highly expressed by Purkinje cells of the cerebellum. CRTAM is a type I transmembrane glycoprotein containing one Ig-like C2-type domain and one Ig-like V-type domain in its extracellular domain, while its cytoplasmic region shows a potential class I PDZ domain. CRTAM is expressed as a homodimer on the cell surface but does not show homotypic binding in trans. The high affinity of CRTAM/IGSF4 adhesion allows CRTAM to disrupt IGSF4 homotypic interactions. IGSF4 and T cell receptor coengagement of CD8⁺ cells expressing CRTAM induces increased IFN γ or IL-22 production.