

## AST Polyclonal Antibody

**catalog number: D-AB-10389L**

**Note:** Centrifuge before opening to ensure complete recovery of vial contents.

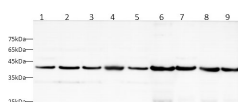
### Description

<b>Reactivity</b>	Human;Mouse;Rat
<b>Immunogen</b>	Recombinant Mouse AST protein expressed by E.coli
<b>Host</b>	Rabbit
<b>Isotype</b>	Rabbit IgG
<b>Purification</b>	Antigen Affinity Purification
<b>Buffer</b>	PBS with 0.05% Proclin300, 1% protective protein and 50% glycerol, pH7.4

### Applications

<b>WB</b>	1:500-1:1000
-----------	--------------

### Data



Western blot with AST Polyclonal antibody at dilution of 1:1000. lane 1:HeLa whole cell lysate, lane 2:HEK-293T whole cell lysate, lane 3:HepG2 whole cell lysate, lane 4:NIH-3T3 whole cell lysate, lane 5:C2C12 whole cell lysate, lane 6:Mouse liver, lane 7:Mouse brain, lane 8:Rat liver, lane 9:Rat brain

**Observed-MW:41 kDa**

**Calculated-MW:47 kDa**

### Preparation & Storage

<b>Storage</b>	Store at -20°C Valid for 12 months. Avoid freeze / thaw cycles.
<b>Shipping</b>	The product is shipped with ice pack, upon receipt, store it immediately at the temperature recommended.

### Background

Catalyzes the irreversible transamination of the L-tryptophan metabolite L-kynurenine to form kynurenic acid (KA). As a member of the malate-aspartate shuttle, it has a key role in the intracellular NAD(H) redox balance. Is important for metabolite exchange between mitochondria and cytosol, and for amino acid metabolism. Facilitates cellular uptake of long-chain free fatty acids.

### For Research Use Only