

MRPS28 Polyclonal Antibody

catalog number: E-AB-53068

Note: Centrifuge before opening to ensure complete recovery of vial contents.

Description

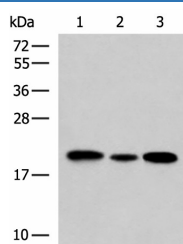
Reactivity	Human
Immunogen	Fusion protein of human MRPS28
Host	Rabbit
Isotype	IgG
Purification	Antigen affinity purification
Conjugation	Unconjugated
Buffer	Phosphate buffered solution, pH 7.4, containing 0.05% stabilizer and 50% glycerol.

Applications

Recommended Dilution

WB	1:500-1:2000
IHC	1:100-1:300

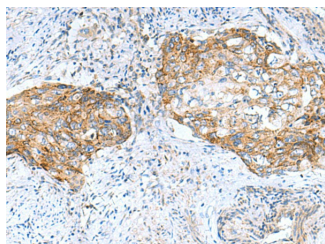
Data



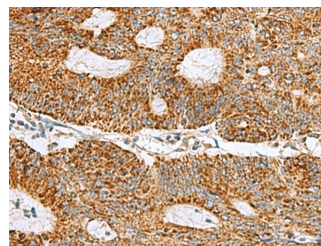
Western blot analysis of HL-60 Jurkat and A549 cell lysates using MRPS28 Polyclonal Antibody at dilution of 1:650

Observed-MW:Refer to figures

Calculated-MW:21 kDa



Immunohistochemistry of paraffin-embedded Human cervical cancer tissue using MRPS28 Polyclonal Antibody at dilution of 1:105(×200)



Immunohistochemistry of paraffin-embedded Human colorectal cancer tissue using MRPS28 Polyclonal Antibody at dilution of 1:105(×200)

Preparation & Storage

Storage	Store at -20°C Valid for 12 months. Avoid freeze / thaw cycles.
Shipping	The product is shipped with ice pack, upon receipt, store it immediately at the temperature recommended.

Background

For Research Use Only

Mammalian mitochondrial ribosomal proteins are encoded by nuclear genes and help in protein synthesis within the mitochondrion. Mitochondrial ribosomes (mitoribosomes) consist of a small 28S subunit and a large 39S subunit. They have an estimated 75% protein to rRNA composition compared to prokaryotic ribosomes, where this ratio is reversed. Another difference between mammalian mitoribosomes and prokaryotic ribosomes is that the latter contain a 5S rRNA. Among different species, the proteins comprising the mitoribosome differ greatly in sequence, and sometimes in biochemical properties, which prevents easy recognition by sequence homology. This gene encodes a 28S subunit protein that has been called mitochondrial ribosomal protein S35 in the literature.