

ZBED1 Polyclonal Antibody

catalog number: E-AB-52662

Note: Centrifuge before opening to ensure complete recovery of vial contents.

Description

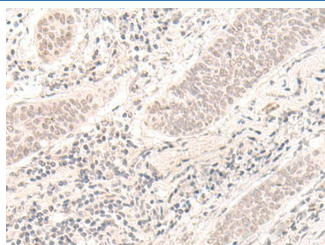
| | |
|--------------|--|
| Reactivity | Human |
| Immunogen | Fusion protein of human ZBED1 |
| Host | Rabbit |
| Isotype | IgG |
| Purification | Antigen affinity purification |
| Conjugation | Unconjugated |
| Buffer | Phosphate buffered solution, pH 7.4, containing 0.05% stabilizer and 50% glycerol. |

Applications

Recommended Dilution

| | |
|-----|------------|
| IHC | 1:30-1:150 |
|-----|------------|

Data



Immunohistochemistry of paraffin-embedded Human esophagus cancer tissue using ZBED1 Polyclonal Antibody at dilution of 1:40($\times 200$)

Preparation & Storage

| | |
|----------|--|
| Storage | Store at -20°C Valid for 12 months. Avoid freeze / thaw cycles. |
| Shipping | The product is shipped with ice pack, upon receipt, store it immediately at the temperature recommended. |

Background

This gene is located in the pseudoautosomal region 1 (PAR1) of X and Y chromosomes. It was earlier identified as a gene with similarity to Ac transposable elements, however, was found not to have transposase activity. Later studies show that this gene product is localized in the nucleus and functions as a transcription factor. It binds to DNA elements found in the promoter regions of several genes related to cell proliferation, such as histone H1, hence may have a role in regulating genes related to cell proliferation. Alternatively spliced transcript variants with different 5' untranslated region have been found for this gene.