

METTL17 Polyclonal Antibody

catalog number: E-AB-17937

Note: Centrifuge before opening to ensure complete recovery of vial contents.

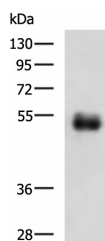
Description

Reactivity	Human;Mouse
Immunogen	Synthetic peptide of human METTL17
Host	Rabbit
Isotype	IgG
Purification	Antigen affinity purification
Buffer	Phosphate buffered solution, pH 7.4, containing 0.05% stabilizer and 50% glycerol.

Applications Recommended Dilution

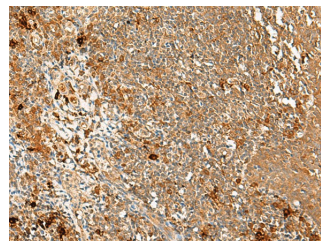
WB	1:500-1:2000
IHC	1:50-1:300

Data



Western blot analysis of Human colorectal cancer tissue lysate using METTL17 Polyclonal Antibody at dilution of 1:700

Observed-MW:Refer to figures
Calculated-MW:51 kDa



Immunohistochemistry of paraffin-embedded Human tonsil tissue using METTL17 Polyclonal Antibody at dilution of 1:60(×200)

Preparation & Storage

Storage	Store at -20°C Valid for 12 months. Avoid freeze / thaw cycles.
Shipping	The product is shipped with ice pack,upon receipt,store it immediately at the temperature recommended.

Background

May be a component of the mitochondrial small ribosomal subunit.

For Research Use Only