

## SLC44A2 Polyclonal Antibody

catalog number: **E-AB-91058**

**Note:** Centrifuge before opening to ensure complete recovery of vial contents.

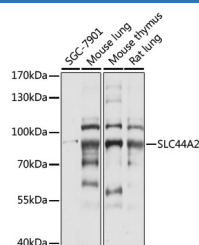
### Description

|                     |                                                                                    |
|---------------------|------------------------------------------------------------------------------------|
| <b>Reactivity</b>   | Human;Mouse;Rat                                                                    |
| <b>Immunogen</b>    | A synthetic peptide of human SLC44A2                                               |
| <b>Host</b>         | Rabbit                                                                             |
| <b>Isotype</b>      | IgG                                                                                |
| <b>Purification</b> | Affinity purification                                                              |
| <b>Buffer</b>       | Phosphate buffered solution, pH 7.4, containing 0.05% stabilizer and 50% glycerol. |

### Applications

|           |              |
|-----------|--------------|
| <b>WB</b> | 1:500-1:2000 |
|-----------|--------------|

### Data



Western blot analysis of extracts of various cell lines using SLC44A2 Polyclonal Antibody at 1:1000 dilution.

**Observed-MV:90 kDa**

**Calculated-MV:79 kDa/80 kDa**

### Preparation & Storage

|                 |                                                                                                          |
|-----------------|----------------------------------------------------------------------------------------------------------|
| <b>Storage</b>  | Store at -20°C Valid for 12 months. Avoid freeze / thaw cycles.                                          |
| <b>Shipping</b> | The product is shipped with ice pack, upon receipt, store it immediately at the temperature recommended. |

### Background

Isoform 1, but not isoform 3, exhibits some choline transporter activity.

### For Research Use Only