

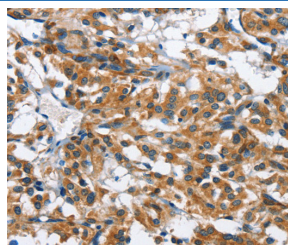
BPI Polyclonal Antibody

catalog number: E-AB-14800

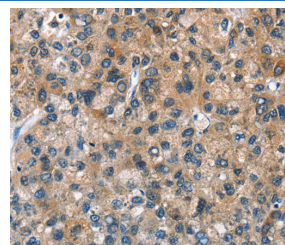
Note: Centrifuge before opening to ensure complete recovery of vial contents.

Description	
Reactivity	Human
Immunogen	Recombinant protein of human BPI
Host	Rabbit
Isotype	IgG
Purification	Affinity purification
Conjugation	Unconjugated
Buffer	Phosphate buffered solution, pH 7.4, containing 0.05% stabilizer and 50% glycerol.
Applications	Recommended Dilution
IHC	1:50-1:200

Data



Immunohistochemistry of paraffin-embedded Human thyroid cancer tissue using BPI Polyclonal Antibody at dilution 1:50



Immunohistochemistry of paraffin-embedded Human liver cancer tissue using BPI Polyclonal Antibody at dilution 1:50

Preparation & Storage

Storage	Store at -20°C Valid for 12 months. Avoid freeze / thaw cycles.
Shipping	The product is shipped with ice pack, upon receipt, store it immediately at the temperature recommended.

Background

This gene encodes a lipopolysaccharide binding protein. It is associated with human neutrophil granules and has bactericidal activity on gram-negative organisms. The cytotoxic action of BPI is limited to many species of Gram-negative bacteria; this specificity may be explained by a strong affinity of the very basic N-terminal half for the negatively charged lipopolysaccharides that are unique to the Gram-negative bacterial outer envelope. Has antibacterial activity against the Gram-negative bacterium *P.aeruginosa*, this activity is inhibited by LPS from *P.aeruginosa*.