

Recombinant Human SELP/selectin P/P-selectin Protein (Fc Tag)

Catalog Number: PKSH030759

Note: *Centrifuge before opening to ensure complete recovery of vial contents.*

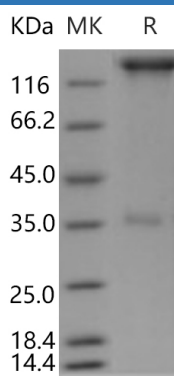
Description

Species	Human
Source	HEK293 Cells-derived Human SELP/selectin P/P-selectin protein Met 1-Ala 771, with an C-terminal hFc
Calculated MW	107 kDa
Observed MW	130-150 kDa
Accession	AAN06828.1
Bio-activity	Measured by the ability of the immobilized protein to support the adhesion of U937 human histiocytic lymphoma cells. When 5×10^4 cells/well are added to SELP/Fc Chimera coated plates (10 µg/mL with 100 µL/well), > 80% cells will adhere after 1 hour at 37°C.

Properties

Purity	> 85 % as determined by reducing SDS-PAGE.
Endotoxin	< 1.0 EU per µg of the protein as determined by the LAL method.
Storage	Generally, lyophilized proteins are stable for up to 12 months when stored at -20 to -80°C. Reconstituted protein solution can be stored at 4-8°C for 2-7 days. Aliquots of reconstituted samples are stable at < -20°C for 3 months.
Shipping	This product is provided as lyophilized powder which is shipped with ice packs.
Formulation	Lyophilized from sterile PBS, pH 7.4 Normally 5% - 8% trehalose, mannitol and 0.01% Tween 80 are added as protectants before lyophilization. Please refer to the specific buffer information in the printed manual.
Reconstitution	Please refer to the printed manual for detailed information.

Data



> 85 % as determined by reducing SDS-PAGE.

Background

For Research Use Only

Toll-free: 1-888-852-8623
Web: www.elabscience.com

Tel: 1-832-243-6086
Email: techsupport@elabscience.com

Fax: 1-832-243-6017

P selectin (SELP) is a 140kDa protein that is stored in the alpha-granules of platelets and Weibel-Palade bodies of endothelial cells. SELP mediates rapid rolling of leukocyte rolling over vascular surfaces during the initial steps in inflammation through interaction with PSGL1. P selectin is a cell adhesion molecule on the surface of activated endothelial cells. Cellular adhesion molecules are a large family of proteins that attach the cytoskeleton and intracellular signaling cascades with the extracellular environment. SELP is a calcium-dependent receptor for myeloid cells that binds to sialylated forms of Lewis blood group carbohydrate antigens on neutrophils and monocytes. This protein redistributes to the plasma membrane during platelet activation and degranulation and mediates the interaction of activated endothelial cells or platelets with leukocytes.

For Research Use Only

Toll-free: 1-888-852-8623
Web: www.elabscience.com

Tel: 1-832-243-6086
Email: techsupport@elabscience.com

Fax: 1-832-243-6017