

Recombinant Mouse CCL3 Protein(Gst Tag)

Catalog Number: PDEM100135

Note: Centrifuge before opening to ensure complete recovery of vial contents.

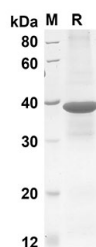
Description

Species	Mouse
Source	E.coli-derived Mouse CCL3 protein Ala24-Ala92, with an N-terminal GST
Calculated MW	33.5 kDa
Observed MW	39 kDa
Accession	P10855
Bio-activity	Not validated for activity

Properties

Purity	> 90% as determined by reducing SDS-PAGE.
Endotoxin	< 10 EU/mg of the protein as determined by the LAL method
Storage	Generally, lyophilized proteins are stable for up to 12 months when stored at -20 to -80 °C. Reconstituted protein solution can be stored at 4-8°C for 2-7 days. Aliquots of reconstituted samples are stable at < -20°C for 3 months.
Shipping	This product is provided as lyophilized powder which is shipped with ice packs.
Formulation	Lyophilized from a 0.2 µm filtered solution in PBS with 5% Trehalose and 5% Mannitol.
Reconstitution	It is recommended that sterile water be added to the vial to prepare a stock solution of 0.5 mg/mL. Concentration is measured by UV-Vis.

Data



SDS-PAGE analysis of Mouse CCL3 proteins, 2 µg/lane of Recombinant Mouse CCL3 proteins was resolved with an SDS-PAGE under reducing conditions, showing bands at 33.5 KD

Background

CCL3 is a cytokine belonging to the CC chemokine family. Chemokines are a family of structurally related leukocyte chemoattractant cytokines that play a central role during immunoregulatory and inflammation processes. All chemokines contain four conserved cysteines linked by disulfide bonds, and two major subfamilies, namely CXC and CC, are defined on the basis of the first two cysteines which are separated by one amino acid or are adjacent. CCL3 is involved in the acute inflammatory state in the recruitment and activation of polymorphonuclear leukocytes.

For Research Use Only

Toll-free: 1-888-852-8623
Web: www.elabscience.com

Tel: 1-832-243-6086
Email: techsupport@elabscience.com

Fax: 1-832-243-6017