

ENO2 Monoclonal Antibody

catalog number: **AN200228P**

Note: *Centrifuge before opening to ensure complete recovery of vial contents.*

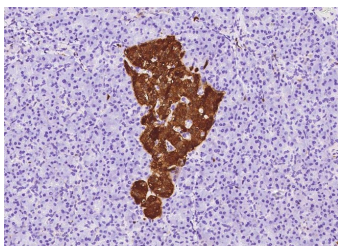
Description

Reactivity	Human
Immunogen	Recombinant Human ENO2 Protein
Host	Mouse
Isotype	IgG1
Clone	5B5
Purification	Protein A
Buffer	0.2 µm filtered solution in PBS

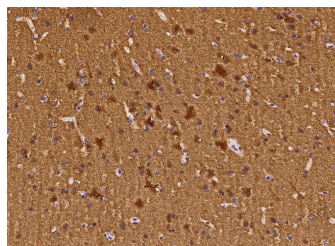
Applications Recommended Dilution

WB	1:500-1:2000
IHC-P	1:100-1:500

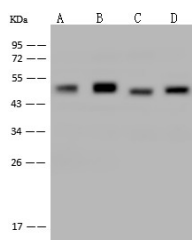
Data



Immunohistochemistry of paraffin-embedded human pancreas using ENO2 Monoclonal Antibody at dilution of 1:200.



Immunohistochemistry of paraffin-embedded human brain using ENO2 Monoclonal Antibody at dilution of 1:200.



Western Blot with ENO2 Monoclonal Antibody at dilution of 1:500 dilution. Lane A: HepG2 Whole Cell Lysate, Lane B: SH-SY5Y Whole Cell Lysate, Lane C: Hela Whole Cell Lysate, Lane D: Jurkat Whole Cell Lysate, Lysates/proteins at 30 µg per lane.

Observed-MW:50 kDa

Calculated-MW:47 kDa

Preparation & Storage

Storage	This antibody can be stored at 2°C-8°C for one month without detectable loss of activity. Antibody products are stable for twelve months from date of receipt when stored at -20°C to -80°C. Preservative-Free. Avoid repeated freeze-thaw cycles.
Shipping	Ice bag

Background

For Research Use Only

Toll-free: 1-888-852-8623
Web: www.elabscience.com

Tel: 1-832-243-6086
Email: techsupport@elabscience.com

Fax: 1-832-243-6017

Rev. V1.0

Has neurotrophic and neuroprotective properties on a broad spectrum of central nervous system (CNS) neurons.
Binds, in a calcium-dependent manner, to cultured neocortical neurons and promotes cell survival.

For Research Use Only

Toll-free: 1-888-852-8623

Web: www.elabscience.com

Tel: 1-832-243-6086

Email: techsupport@elabscience.com

Fax: 1-832-243-6017

Rev. V1.0