

# Recombinant Human UBE2T Protein (His Tag)

Catalog Number:PKSH030839



**Note:** Centrifuge before opening to ensure complete recovery of vial contents.

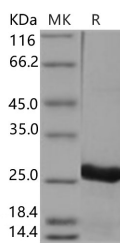
## Description

<b>Synonyms</b>	Ubiquitin-Conjugating Enzyme E2 T;Cell Proliferation-Inducing Gene 50 Protein;Ubiquitin Carrier Protein T;Ubiquitin-Protein Ligase T;UBE2T
<b>Species</b>	Human
<b>Expression Host</b>	E.coli
<b>Sequence</b>	Met 1-Val197
<b>Accession</b>	Q9NPD8
<b>Calculated Molecular Weight</b>	23.9 kDa
<b>Tag</b>	C-His

## Properties

<b>Purity</b>	> 90 % as determined by reducing SDS-PAGE.
<b>Endotoxin</b>	Please contact us for more information.
<b>Storage</b>	Generally, lyophilized proteins are stable for up to 12 months when stored at -20 to -80°C. Reconstituted protein solution can be stored at 4-8°C for 2-7 days. Aliquots of reconstituted samples are stable at < -20°C for 3 months.
<b>Shipping</b>	This product is provided as lyophilized powder which is shipped with ice packs.
<b>Formulation</b>	Lyophilized from sterile PBS, 30 % glycerol, 0.1 % Tween 20, 0.4 mM Chaps, pH 7.5 Normally 5 % - 8 % trehalose, mannitol and 0.01% Tween80 are added as protectants before lyophilization. Please refer to the specific buffer information in the prin
<b>Reconstitution</b>	Please refer to the printed manual for detailed information.

## Data



> 90 % as determined by reducing SDS-PAGE.

## Background

Ube2T is the E2 ubiquitin-conjugating enzyme of the Fanconi anemia DNA repair pathway and it is overexpressed in several cancers; representing an attractive target for the development of inhibitors. Notably; UBE2T locates at 1q32.1; and the gain of 1q is frequently observed in a variety of cancers. For instance; UBE2T serves an important role in the growth of bladder cancer cells; and may be considered as a potential biomarker and therapeutic target for bladder cancer.

## For Research Use Only

A Reliable Research Partner in Life Science and Medicine

Toll-free: 1-888-852-8623

Web: [www.elabscience.com](http://www.elabscience.com)

Tel: 1-832-243-6086

Email: [techsupport@elabscience.com](mailto:techsupport@elabscience.com)

Fax: 1-832-243-6017