

EpCAM/TROP-1 Polyclonal Antibody(Capture/Detector)

catalog number: AN004600P

Note: Centrifuge before opening to ensure complete recovery of vial contents.

Description

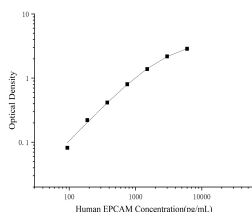
Reactivity	Human;Mouse
Immunogen	Recombinant Human EpCAM/TROP-1 Protein expressed by Mammalian
Host	Rabbit
Isotype	Rabbit IgG
Purification	Antigen Affinity Purification
Conjugation	Unconjugated
Buffer	Phosphate buffered solution, pH 7.2, containing 0.05% proclin 300.

Applications

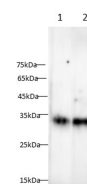
Recommended Dilution

ELISA Capture	2-8 µg/mL
ELISA Detector	0.1-0.4 µg/mL
WB	1:500-1:1000

Data



Sandwich ELISA-Recombinant Human EpCAM/TROP-1 Protein standard curve. Background subtracted standard curve using Anti-EpCAM/TROP-1 antibody(AN004600P) (Capture), Anti-EpCAM/TROP-1 antibody(AN004600P) (Detector). The reference range value is 93.8 - 6,000 pg/mL for human.



Western blot with Anti EpCAM/TROP-1 Polyclonal antibody at dilution of 1:1000. Lane 1: A431 cell lysate, Lane 2: Mouse small intestine tissue lysate.

Preparation & Storage

Storage	Store at 4°C valid for 12 months or -20°C valid for long term storage, avoid freeze / thaw cycles.
Shipping	The product is shipped with ice pack, upon receipt, store it immediately at the temperature recommended.

Background

This gene encodes a carcinoma-associated antigen and is a member of a family that includes at least two type I membrane proteins. This antigen is expressed on most normal epithelial cells and gastrointestinal carcinomas and functions as a homotypic calcium-independent cell adhesion molecule. The antigen is being used as a target for immunotherapy treatment of human carcinomas. Mutations in this gene result in congenital tufting enteropathy.

For Research Use Only