

Recombinant Renin/REN/Angiotensinogenase Monoclonal Antibody

catalog number: **AN300357P**

Note: Centrifuge before opening to ensure complete recovery of vial contents.

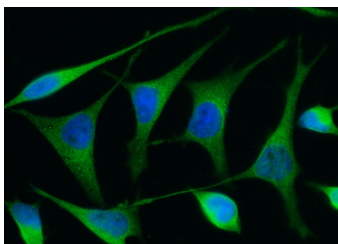
Description

Reactivity	Human
Immunogen	Recombinant Human Renin protein
Host	Rabbit
Isotype	IgG
Clone	12G3
Purification	Protein A
Buffer	0.2 µm filtered solution in PBS

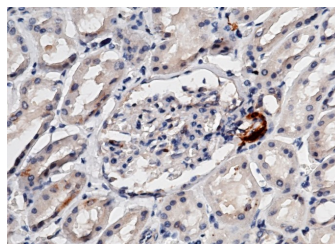
Applications Recommended Dilution

IHC-P	1:500-1:2000
ICC/IF	1:100-1:500
FCM	1:25-1:100

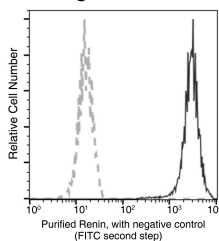
Data



Immunofluorescence analysis of Human Renin in Hela cells. Cells were fixed with 4% PFA, permeabilized with 0.3% Triton X-100 in PBS, blocked with 10% serum, and incubated with rabbit anti-Human Renin monoclonal antibody (1:300) at 37°C 1 hour. Then cells were stained with the Alexa Fluor® 488-conjugated goat Anti-rabbit IgG secondary antibody (green) and counterstained with DAPI (blue). Positive staining was localized to cytoplasm.



Immunohistochemistry of paraffin-embedded human kidney using Renin/REN/Angiotensinogenase Monoclonal Antibody at dilution of 1:1000.



Flow cytometric analysis of Human Renin expression on Jurkat cells. The cells were treated according to manufacturer's manual, stained with purified anti-Human Renin, then a FITC-conjugated second step antibody. The fluorescence histograms were derived from gated events with the forward and side light-scatter characteristics of intact cells.

Preparation & Storage

For Research Use Only

Toll-free: 1-888-852-8623
Web: www.elabscience.com

Tel: 1-832-243-6086
Email: techsupport@elabscience.com

Fax: 1-832-243-6017

Rev. V1.0

Storage

This antibody can be stored at 2°C-8°C for one month without detectable loss of activity. Antibody products are stable for twelve months from date of receipt when stored at -20°C to -80°C. Preservative-Free. Avoid repeated freeze-thaw cycles.

Shipping

Ice bag

Background

Renin is a highly specific endopeptidase, whose only known function is to generate angiotensin I from angiotensinogen in the plasma, initiating a cascade of reactions that produce an elevation of blood pressure and increased sodium retention by the kidney.

For Research Use Only

Toll-free: 1-888-852-8623
Web: www.elabscience.com

Tel: 1-832-243-6086
Email: techsupport@elabscience.com

Fax: 1-832-243-6017

Rev. V1.0