

GFAP Monoclonal Antibody

catalog number: E-AB-70205

Note: Centrifuge before opening to ensure complete recovery of vial contents.

Description

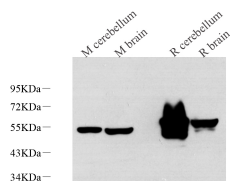
Reactivity	Mouse;Rat
Immunogen	KLH conjugated Synthetic peptide corresponding to Mouse GFAP
Host	Mouse
Isotype	IgG
Clone	2B12F1
Purification	Affinity purification
Conjugation	Unconjugated
Buffer	Phosphate buffered solution, pH 7.4, containing 0.05% stabilizer, 1% protein protectant and 50% glycerol.

Applications

Recommended Dilution

WB	1:500-1:5000
IHC	1:500-1:2000
IF	1:200-1:1000

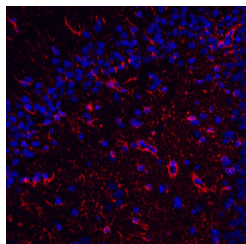
Data



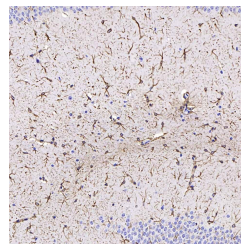
Western Blot analysis of various samples using GFAP Monoclonal Antibody at dilution of 1:1000.

Observed-MW:49 kDa

Calculated-MW:49 kDa



Immunofluorescence analysis of paraffin-embedded rat brain using GFAP Monoclonal Antibody at dilution of 1:400.



Immunohistochemistry analysis of paraffin-embedded mouse brain using GFAP Monoclonal Antibody at dilution of 1:400.

Preparation & Storage

Storage	Store at -20°C Valid for 12 months. Avoid freeze / thaw cycles.
Shipping	The product is shipped with ice pack, upon receipt, store it immediately at the temperature recommended.

Background

For Research Use Only

GFAP (Glial fibrillary acidic protein), an intermediate-filament (IF) protein, is specifically expressed in cells of astroglial lineage and is widely used to mark the astroglia in the brain. It is also used as a marker for intracranial and intraspinal tumors arising from astrocytes.