

Recombinant Human BAMBI Protein (His Tag)

Catalog Number:PKSH031371



Note: Centrifuge before opening to ensure complete recovery of vial contents.

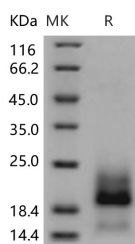
Description

Synonyms	NMA
Species	Human
Expression Host	HEK293 Cells
Sequence	Met 1-Ala 152
Accession	NP_036474.1
Calculated Molecular Weight	16.1 kDa
Observed molecular weight	16-23 kDa
Tag	C-His

Properties

Purity	> 95 % as determined by reducing SDS-PAGE.
Endotoxin	< 1.0 EU per µg of the protein as determined by the LAL method.
Storage	Generally, lyophilized proteins are stable for up to 12 months when stored at -20 to -80°C. Reconstituted protein solution can be stored at 4-8°C for 2-7 days. Aliquots of reconstituted samples are stable at < -20°C for 3 months.
Shipping	This product is provided as lyophilized powder which is shipped with ice packs.
Formulation	Lyophilized from sterile PBS, pH 7.4 Normally 5 % - 8 % trehalose, mannitol and 0.01 % Tween80 are added as protectants before lyophilization. Please refer to the specific buffer information in the printed manual.
Reconstitution	Please refer to the printed manual for detailed information.

Data



> 95 % as determined by reducing SDS-PAGE.

Background

BMP and activin membrane-bound inhibitor (BAMBI) is a transmembrane glycoprotein that is a pseudoreceptor of type 1 receptors. BAMBI structurally lacks intracellular serine/ threonine kinase domain but with an extracellular domain and a short cytoplasmic region that share sequence similarities with type 1 receptors, whose members have functions in signal transduction in various developing and pathological processes. BAMBI competes with the type 1 receptor, a receptor of the transforming growth factor-beta (TGF-beta), through functioning as negative regulators of TGF-beta by limiting the signaling range of the TGF-beta family during early embryogenesis. The expression of BAMBI can be induced by accumulated beta-catenin and BMP. The expression level of BAMBI was found aberrantly elevated in most colorectal and hepatocellular carcinomas relative to the corresponding non-cancerous tissues. It suggests that beta-catenin and TGF-beta

For Research Use Only

A Reliable Research Partner in Life Science and Medicine

Toll-free: 1-888-852-8623

Web: www.elabscience.com

Tel: 1-832-243-6086

Email: techsupport@elabscience.com

Fax: 1-832-243-6017

Recombinant Human BAMBI Protein (His Tag)

Catalog Number:PKSH031371



interfere growth arrest by inducing the expression of BAMBI, and this may contribute to colorectal and hepatocellular tumorigenesis.

For Research Use Only

A Reliable Research Partner in Life Science and Medicine

Toll-free: 1-888-852-8623

Web: www.elabscience.com

Tel: 1-832-243-6086

Email: techsupport@elabscience.com

Fax: 1-832-243-6017