

ATAD3A Polyclonal Antibody

Catalog Number: E-AB-52455



Note: Centrifuge before opening to ensure complete recovery of vial contents.

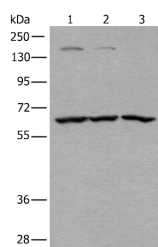
Description

Reactivity	Human, Mouse, Rat
Immunogen	Fusion protein of human ATAD3A
Host	Rabbit
Isotype	IgG
Purification	Antigen affinity purification
Conjugation	Unconjugated
Formulation	PBS with 0.05% NaN ₃ and 40% Glycerol, pH7.4

Applications Recommended Dilution

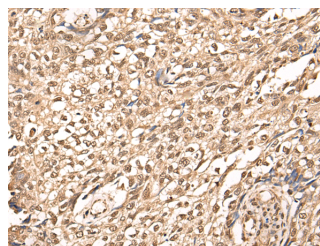
WB	1:500-1:2000
IHC	1:25-1:100
ELISA	1:5000-1:10000

Data

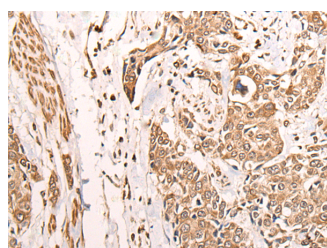


Western blot analysis of Raji HeLa and A431 cell lysates using ATAD3A Polyclonal Antibody at dilution of 1:400

Observed Mw: Refer to figures
Calculated Mw: 71 kDa



Immunohistochemistry of paraffin-embedded Human lung cancer tissue using ATAD3A Polyclonal Antibody at dilution of 1:30 (×200)



Immunohistochemistry of paraffin-embedded Human prostate cancer tissue using ATAD3A Polyclonal Antibody at dilution of 1:30 (×200)

Preparation & Storage

Storage Store at -20°C. Avoid freeze / thaw cycles.

Background

For Research Use Only

A Reliable Research Partner in Life Science and Medicine

Toll-free: 1-888-852-8623

Web: www.elabscience.com

Tel: 1-832-243-6086

Email: techsupport@elabscience.com

Fax: 1-832-243-6017

ATAD3A Polyclonal Antibody

Catalog Number: E-AB-52455



ATAD3A and ATAD3B (MIM 612317) are mitochondrial membrane proteins that contribute to the stabilization of large mitochondrial DNA (mtDNA)-protein complexes called nucleoids (He et al., 2007 [PubMed 17210950]).

For Research Use Only

A Reliable Research Partner in Life Science and Medicine

Toll-free: 1-888-852-8623

Tel: 1-832-243-6086

Fax: 1-832-243-6017

Web: www.elabscience.com

Email: techsupport@elabscience.com