

Recombinant Human KEL/CD238 Protein (His Tag)

Catalog Number:PKSH032671



Note: Centrifuge before opening to ensure complete recovery of vial contents.

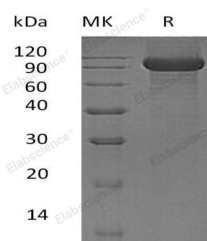
Description

Synonyms	Kell blood group glycoprotein;CD238;KEL
Species	Human
Expression Host	HEK293 Cells
Sequence	Asn68-Trp732
Accession	P23276
Calculated Molecular Weight	76.4 kDa
Observed molecular weight	85-120 kDa
Tag	C-His

Properties

Purity	> 95 % as determined by reducing SDS-PAGE.
Endotoxin	< 1.0 EU per µg of the protein as determined by the LAL method.
Storage	Store at < -20°C, stable for 6 months. Please minimize freeze-thaw cycles.
Shipping	This product is provided as liquid. It is shipped at frozen temperature with blue ice/gel packs. Upon receipt, store it immediately at < - 20°C.
Formulation	Supplied as a 0.2 µm filtered solution of 20mM PB, 150mM NaCl, pH 7.4.
Reconstitution	Not Applicable

Data



> 95 % as determined by reducing SDS-PAGE.

Background

Kell blood group glycoprotein (KEL) is a single-pass type II membrane protein which belongs to the peptidase M13 family. It is expressed in erythrocytes and testis, and, at lower levels, in skeletal muscle, tonsils, lymph node, spleen and appendix. KEL has been shown zinc endopeptidase with endothelin-3-converting enzyme activity. It cleaves EDN1, EDN2 and EDN3, with a marked preference for EDN3. It links via a single disulfide bond to the XK membrane protein that carries the Kx antigen.

For Research Use Only

A Reliable Research Partner in Life Science and Medicine

Toll-free: 1-888-852-8623

Web: www.elabscience.com

Tel: 1-832-243-6086

Email: techsupport@elabscience.com

Fax: 1-832-243-6017