

## Recombinant Hemoglobin Alpha Monoclonal Antibody

catalog number: **AN301545L**

**Note:** Centrifuge before opening to ensure complete recovery of vial contents.

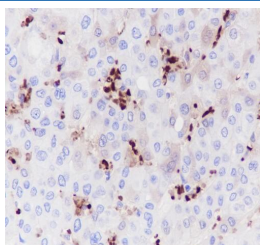
### Description

<b>Reactivity</b>	Human;Rat;Mouse
<b>Immunogen</b>	Recombinant human Hemoglobin Alpha fragment
<b>Host</b>	Rabbit
<b>Isotype</b>	IgG, $\kappa$
<b>Clone</b>	A244
<b>Purification</b>	Protein A purified
<b>Buffer</b>	PBS, 50% glycerol, 0.05% Proclin 300, 0.05% protein protectant.

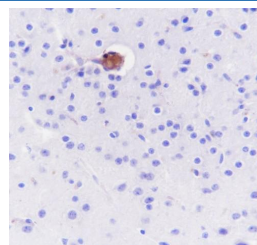
### Applications Recommended Dilution

<b>IHC</b>	1:200-1:1000
------------	--------------

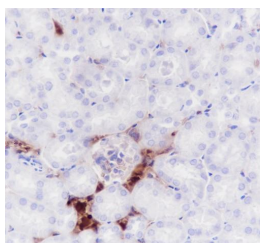
### Data



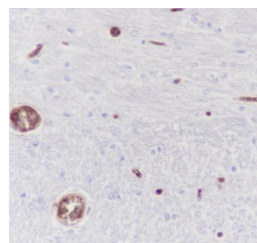
Immunohistochemistry of paraffin-embedded Human liver using Hemoglobin Alpha Monoclonal Antibody at dilution of 1:1000.



Immunohistochemistry of paraffin-embedded Mouse cerebrum using Hemoglobin Alpha Monoclonal Antibody at dilution of 1:1000.



Immunohistochemistry of paraffin-embedded Mouse kidney using Hemoglobin Alpha Monoclonal Antibody at dilution of 1:1000.



Immunohistochemistry of paraffin-embedded Rat cerebrum using Hemoglobin Alpha Monoclonal Antibody at dilution of 1:1000.

### Preparation & Storage

<b>Storage</b>	Store at -20°C Valid for 12 months. Avoid freeze / thaw cycles.
<b>Shipping</b>	Ice bag

### Background

HBA1 (Hemoglobin Subunit Alpha 1) is a Protein Coding gene. Diseases associated with HBA1 include Hemoglobin H Disease and Alpha-Thalassemia. Among its related pathways are Folate Metabolism and Effects of Nitric Oxide. Gene Ontology (GO) annotations related to this gene include iron ion binding and oxygen binding. An important paralog of this gene is HBA2.

### For Research Use Only