

SRR Polyclonal Antibody

catalog number: **E-AB-68017**

Note: Centrifuge before opening to ensure complete recovery of vial contents.

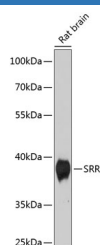
Description

Reactivity	Human;Mouse;Rat
Immunogen	Recombinant fusion protein of human SRR (NP_068766.1).
Host	Rabbit
Isotype	IgG
Purification	Affinity purification
Buffer	Phosphate buffered solution, pH 7.4, containing 0.05% stabilizer and 50% glycerol.

Applications

WB	1:500-1:2000
-----------	--------------

Data



Western blot analysis of extracts of Rat brain using SRR
Polyclonal Antibody at dilution of 1:1000.

Observed-MW:37 kDa

Calculated-MW:36 kDa

Preparation & Storage

Storage	Store at -20°C Valid for 12 months. Avoid freeze / thaw cycles.
Shipping	The product is shipped with ice pack, upon receipt, store it immediately at the temperature recommended.

Background

SRR (Serine Racemase) is a Protein Coding gene. Diseases associated with SRR include Robinow Syndrome, Autosomal Recessive 1 and Vitamin E, Familial Isolated Deficiency Of. Among its related pathways are Neuroscience and Metabolism. Gene Ontology (GO) annotations related to this gene include calcium ion binding and magnesium ion binding. An important paralog of this gene is CBS.

For Research Use Only