

SAA3 Polyclonal Antibody

catalog number: **E-AB-90313**

Note: Centrifuge before opening to ensure complete recovery of vial contents.

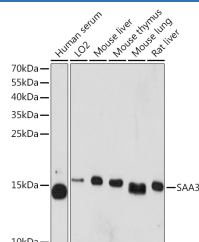
Description

Reactivity	Human;Mouse;Rat
Immunogen	A synthetic peptide of mouse SAA3P
Host	Rabbit
Isotype	IgG
Purification	Affinity purification
Buffer	Phosphate buffered solution, pH 7.4, containing 0.05% stabilizer and 50% glycerol.

Applications Recommended Dilution

WB	1:500-1:2000
-----------	--------------

Data



Western blot analysis of extracts of various cell lines using SAA3 Polyclonal Antibody at 1:1000 dilution.

Observed-MW:14 kDa

Calculated-MW:13 kDa

Preparation & Storage

Storage	Store at -20°C Valid for 12 months. Avoid freeze / thaw cycles.
Shipping	The product is shipped with ice pack, upon receipt, store it immediately at the temperature recommended.

Background

Enables Toll-like receptor 4 binding activity and chemoattractant activity. Acts upstream of or within several processes, including I-kappaB phosphorylation; cellular response to interleukin-1; and response to stilbenoid. Located in extracellular space. Is expressed in cerebellum; ileum; liver; reproductive system; and thymus. Orthologous to several human genes including SAA2 (serum amyloid A2).

For Research Use Only