

# SOD2 Polyclonal Antibody

catalog number: D-AB-10436L

**Note:** Centrifuge before opening to ensure complete recovery of vial contents.

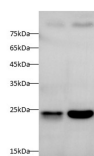
## Description

<b>Reactivity</b>	Human;Mouse;Rat
<b>Immunogen</b>	Recombinant Human SOD2 protein expressed by E.coli
<b>Host</b>	Rabbit
<b>Isotype</b>	IgG
<b>Purification</b>	Antigen Affinity Purification
<b>Conjugation</b>	Unconjugated
<b>buffer</b>	PBS with 0.05% proclin 300, 1% protective protein and 50% glycerol,pH7.4

## Applications

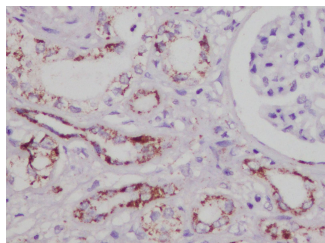
Applications	Recommended Dilution
<b>WB</b>	1:500-1:1000
<b>IHC</b>	1:400-1:800

## Data

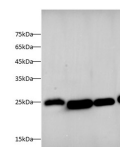


Western blot with SOD2 Polyclonal antibody at dilution of 1:1000.lane 1:SH-SY5Y whole cell lysate,lane 2:HeLa whole cell lysate

**Observed-MV:25 kDa**  
**Calculated-MV:25 kDa**



Immunohistochemistry of paraffinembedded Human kidney using SOD2 Polyclonal Antibody at dilution of 1:800



Western blot with SOD2 Polyclonal antibody at dilution of 1:1000.lane 1:Mouse brain,lane 2:Mouse heart,lane 3:Rat brain,lane 4:Rat heart

**Observed-MV:25 kDa**  
**Calculated-MV:25 kDa**

## Preparation & Storage

<b>Storage</b>	Store at -20°C Valid for 12 months. Avoid freeze / thaw cycles.
<b>Shipping</b>	The product is shipped with ice pack,upon receipt,store it immediately at the temperature recommended.

## Background

Superoxide dismutases (SOD) are important anti-oxidant enzymes that guard against superoxide toxicity. In humans,as in all mammals and most chordates,three forms of superoxide dismutase (SOD) are present: SOD1 is located in the cytoplasm,SOD2 in the mitochondria,and SOD3 is extracellular. Mitochondrial superoxide dismutase [SOD;manganese SOD (MnSOD) or SOD2] neutralizes highly reactive superoxide radical (OD-2),the first member in the plethora of mitochondrial reactive oxygen species.

## For Research Use Only