

## Elab Fluor® 700 Anti-Human HLA-A,B,C Antibody[W6/32]

**Catalog Number:** E-AB-F1130M1

**Note:** Centrifuge before opening to ensure complete recovery of vial contents.

### Description

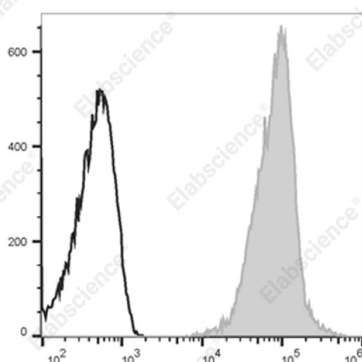
<b>Reactivity</b>	Human
<b>Host</b>	Mouse
<b>Isotype</b>	Mouse IgG2a, $\kappa$
<b>Clone No.</b>	W6/32
<b>Isotype Control</b>	Elab Fluor® 700 Mouse IgG2a, $\kappa$ Isotype Control[C1.18.4] [Product E-AB-F09802M1]
<b>Conjugation</b>	Elab Fluor® 700
<b>Conjugation Information</b>	Elab Fluor® 700 is designed to be excited by the Red laser (627-640 nm) and detected using an optical filter centered near 719 nm (e.g., a 725/40 nm bandpass filter).
<b>Storage Buffer</b>	Phosphate buffered solution, pH 7.2, containing 0.09% stabilizer and 1% protein protectant.

### Applications

### Recommended usage

<b>FCM</b>	Each lot of this antibody is quality control tested by flow cytometric analysis. <b>The amount of the reagent is suggested to be used 5 <math>\mu</math>L of antibody per test (million cells in 100 <math>\mu</math>L staining volume or per 100 <math>\mu</math>L of whole blood).</b> Please check your vial before the experiment. Since applications vary, the appropriate dilutions must be determined for individual use.
------------	--

### Data



Staining of normal human peripheral blood cells with Elab Fluor® 700 Anti-Human HLA-A,B,C Antibody[W6/32] (filled gray histogram) or Elab Fluor® 700 Mouse IgG2a,  $\kappa$  Isotype Control (empty black histogram). Cells in the lymphocytes gate were used for analysis.

### Preparation & Storage

<b>Storage</b>	Keep as concentrated solution. This product can be stored at 2-8°C for 12 months. Please protected from prolonged exposure to light and do not freeze.
<b>Shipping</b>	Ice bag

### Antigen Information

<b>Alternate Names</b>	MHC class I;Major Histocompatibility Class I
<b>Uniprot ID</b>	P04439;P01889;P10321;

### For Research Use Only

Toll-free: 1-888-852-8623  
Web: [www.elabscience.com](http://www.elabscience.com)

Tel: 1-832-243-6086  
Email: [techsupport@elabscience.com](mailto:techsupport@elabscience.com)

Fax: 1-832-243-6017

Rev. V1.9

**Gene ID**

3105

**Background**

MHC class I antigens associated with  $\beta$ 2-microglobulin are expressed by all human nucleated cells. MHC class I molecules are involved in presentation of antigens to CD8 + T cells. They play an important role in cell-mediated immune responses and tumor surveillance.