

# Recombinant Human BMP-2 Protein(Gst Tag)

Catalog Number: PDEH100524



**Note:** Centrifuge before opening to ensure complete recovery of vial contents.

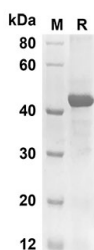
## Description

<b>Species</b>	Human
<b>Source</b>	E.coli-derived Human BMP-2 protein Gln283-Arg396, with an N-terminal GST
<b>Mol_Mass</b>	38 kDa
<b>Accession</b>	P12643
<b>Bio-activity</b>	Not validated for activity

## Properties

<b>Purity</b>	> 90% as determined by reducing SDS-PAGE.
<b>Endotoxin</b>	< 10 EU/mg of the protein as determined by the LAL method
<b>Storage</b>	Generally, lyophilized proteins are stable for up to 12 months when stored at -20 to -80 °C. Reconstituted protein solution can be stored at 4-8°C for 2-7 days. Aliquots of reconstituted samples are stable at < -20°C for 3 months.
<b>Shipping</b>	This product is provided as lyophilized powder which is shipped with ice packs.
<b>Formulation</b>	Lyophilized from a 0.2 µm filtered solution in PBS with 5% Trehalose and 5% Mannitol.
<b>Reconstitution</b>	It is recommended that sterile water be added to the vial to prepare a stock solution of 0.5 mg/mL. Concentration is measured by UV-Vis.

## Data



SDS-PAGE analysis of Human BMP-2 proteins, 2 µg/lane of Recombinant Human BMP-2 proteins was resolved with an SDS-PAGE under reducing conditions, showing bands at 38

KD

## Background

This gene encodes a secreted ligand of the TGF-beta (transforming growth factor-beta) superfamily of proteins. Ligands of this family bind various TGF-beta receptors leading to recruitment and activation of SMAD family transcription factors that regulate gene expression. The encoded preproprotein is proteolytically processed to generate each subunit of the disulfide-linked homodimer, which plays a role in bone and cartilage development. Duplication of a regulatory region downstream of this gene causes a form of brachydactyly characterized by a malformed index finger and second toe in human patients.

## For Research Use Only

A Reliable Research Partner in Life Science and Medicine

Tel:400-999-2100

Email:[techsupport@elabscience.cn](mailto:techsupport@elabscience.cn)

Web:[www.elabscience.cn](http://www.elabscience.cn)

Rev. V1.6