

## G-CSF Monoclonal Antibody

catalog number: **AN200034P**

**Note:** Centrifuge before opening to ensure complete recovery of vial contents.

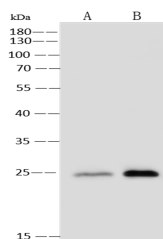
### Description

<b>Reactivity</b>	Human
<b>Immunogen</b>	Recombinant Human G-CSF Protein
<b>Host</b>	Mouse
<b>Isotype</b>	IgG2a
<b>Clone</b>	11D10
<b>Purification</b>	Protein A
<b>Buffer</b>	0.2 µm filtered solution in PBS

### Applications Recommended Dilution

<b>WB</b>	1:500-1:2000
-----------	--------------

### Data



Western Blot with G-CSF Monoclonal Antibody at dilution of 1:500. Lane A: NCI-H460 Whole Cell Lysate, Lane A: 293T Whole Cell Lysate, Lysates/proteins at 30 µg per lane.

**Observed-MW:25 kDa**

**Calculated-MW:22 kDa**

### Preparation & Storage

<b>Storage</b>	This antibody can be stored at 2°C-8°C for one month without detectable loss of activity. Antibody products are stable for twelve months from date of receipt when stored at -20°C to -80°C. Preservative-Free. Avoid repeated freeze-thaw cycles.
<b>Shipping</b>	Ice bag

### Background

The protein encoded by this gene is a cytokine that controls the production, differentiation, and function of granulocytes. The active protein is found extracellularly. Alternatively spliced transcript variants have been described for this gene.

### For Research Use Only