

PISD Polyclonal Antibody

Catalog Number: E-AB-92602



Note: Centrifuge before opening to ensure complete recovery of vial contents.

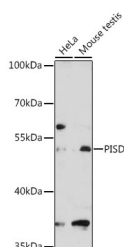
Description

| | |
|---------------------|--|
| Reactivity | Human, Mouse |
| Immunogen | Recombinant fusion protein of human PISD |
| Host | Rabbit |
| Isotype | IgG |
| Purification | Affinity purification |
| Conjugation | Unconjugated |
| Formulation | PBS with 0.01% thiomersal, 50% glycerol, pH 7.3. |

Applications Recommended Dilution

| | |
|-----------|--------------|
| WB | 1:500-1:2000 |
|-----------|--------------|

Data



Western blot analysis of extracts of various cell lines using PISD Polyclonal Antibody at 1:3000 dilution.

Observed MW: 50 kDa
Calculated Mw: 43 kDa/46 kDa

Preparation & Storage

Storage Store at -20°C. Avoid freeze/thaw cycles.

Background

The protein encoded by this gene catalyzes the conversion of phosphatidylserine to phosphatidylethanolamine in the inner mitochondrial membrane. The encoded protein is active in phospholipid metabolism and interorganelle trafficking of phosphatidylserine.

For Research Use Only

A Reliable Research Partner in Life Science and Medicine

Toll-free: 1-888-852-8623

Web: www.elabscience.com

Tel: 1-832-243-6086

Email: techsupport@elabscience.com

Fax: 1-832-243-6017