

GPS2 Polyclonal Antibody

catalog number: E-AB-92558

Note: Centrifuge before opening to ensure complete recovery of vial contents.

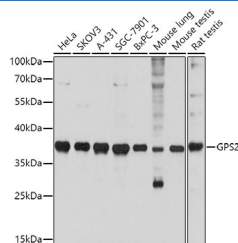
Description

Reactivity	Human;Mouse;Rat
Immunogen	A synthetic peptide of mouse GPS2
Host	Rabbit
Isotype	IgG
Purification	Affinity purification
Buffer	Phosphate buffered solution, pH 7.4, containing 0.05% stabilizer and 50% glycerol.

Applications

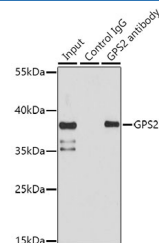
WB	1:500-1:2000
IP	1:20-1:50

Data



Western blot analysis of extracts of various cell lines using GPS2 Polyclonal Antibody at 1:3000 dilution.

Observed-MW:37 kDa
Calculated-MW:20 kDa



Immunoprecipitation analysis of 150ug extracts of HeLa cells using 3ug GPS2 Polyclonal Antibody. Western blot was performed from the immunoprecipitate using GPS2 Polyclonal Antibody at a dilution of 1:1000.

Observed-MW:37 kDa
Calculated-MW:20 kDa

Preparation & Storage

Storage	Store at -20°C Valid for 12 months. Avoid freeze / thaw cycles.
Shipping	The product is shipped with ice pack, upon receipt, store it immediately at the temperature recommended.

Background

This gene encodes a protein involved in Gprotein-mitogen-activated protein kinase (MAPK) signaling cascades. When overexpressed in mammalian cells, this gene could potentially suppress a RAS- and MAPK-mediated signal and interfere with JNK activity, suggesting that the function of this gene may be signal repression. The encoded protein is an integral subunit of the NCOR1-HDAC3 (nuclear receptor corepressor 1-histone deacetylase 3) complex, and it was shown that the complex inhibits JNK activation through this subunit and thus could potentially provide an alternative mechanism for hormone-mediated antagonism of AP1 (activator protein 1) function.

For Research Use Only