

## PE/Cyanine5.5 Anti-Rat CD8a Antibody[OX-8]

**Catalog Number:** E-AB-F1098UI

**Note:** Centrifuge before opening to ensure complete recovery of vial contents.

### Description

<b>Reactivity</b>	Rat
<b>Host</b>	Mouse
<b>Isotype</b>	Mouse IgG1, $\kappa$
<b>Clone No.</b>	OX-8
<b>Isotype Control</b>	PE/Cyanine5.5 Mouse IgG1, $\kappa$ Isotype Control[MOPC-21] [Product E-AB-F09793I]
<b>Conjugation</b>	PE/Cyanine 5.5
<b>Conjugation Information</b>	PE/Cyanine5.5 is designed to be excited by the Blue (488 nm), Green (532 nm) and yellow-green (561 nm) lasers and detected using an optical filter centered near 690 nm (e.g., a 690/50 nm bandpass filter).
<b>Storage Buffer</b>	Phosphate buffered solution, pH 7.2, containing 0.09% stabilizer and 1% protein protectant.

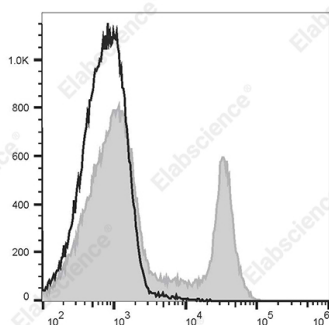
### Applications

### Recommended usage

#### FCM

Each lot of this antibody is quality control tested by flow cytometric analysis. Please check your vial before the experiment. Since applications vary, the appropriate dilutions must be determined for individual use. We suggest each investigator should titrate the reagent to obtain optimal results [The recommended concentration is 0.1-1  $\mu\text{g}/10^6$  cells in 100  $\mu\text{L}$  volume].

### Data



Rat splenocytes are stained with PE/Cyanine5.5 Anti-Rat CD8a Antibody[OX-8] (filled gray histogram) or PE/Cyanine5.5 Mouse IgG1,  $\kappa$  Isotype Control (empty black histogram).

### Preparation & Storage

<b>Storage</b>	Keep as concentrated solution. This product can be stored at 2-8°C for 12 months. Please protected from prolonged exposure to light and do not freeze.
<b>Shipping</b>	Ice bag

### Antigen Information

<b>Alternate Names</b>	CD8A;MAL;T-cell surface glycoprotein CD8 alpha chain;T-lymphocyte differentiation antigen T8/Leu-2
------------------------	--

### For Research Use Only

**Uniprot ID**

P07725

**Gene ID**

24930

**Background**

CD8a is a 32 kD glycoprotein also known as T8, Lyt2, Ly-2, and CD8 $\alpha$ . CD8a is a member of the immunoglobulin superfamily expressed on most thymocytes, subset of mature T cells, most NK cells, macrophages, and some activated CD4+ T cells (not resting). CD8a forms heterodimers with the CD8 $\beta$  chain (CD8b) on the surface of most thymocytes, while mature peripheral T lymphocytes express almost exclusively the CD8  $\alpha\beta$  heterodimer. Intestinal intraepithelial lymphocytes express CD8a without CD8 b. CD8 is an antigen co-receptor on T cells that interacts with MHC class I on antigen-presenting cells or epithelial cells. CD8 participates in T cell activation through its association with the T cell receptor complex and protein tyrosine kinase lck (p56lck).

**For Research Use Only**