

FITC Anti-Mouse CD8a Antibody[53-6.7]

Catalog Number: E-AB-F1104C

Note: Centrifuge before opening to ensure complete recovery of vial contents.

Description

Reactivity	Mouse
Host	Rat
Isotype	Rat IgG2a, κ
Clone No.	53-6.7
Isotype Control	FITC Rat IgG2a, κ Isotype Control[2A3] [Product E-AB-F09832C]
Conjugation	FITC
Conjugation Information	FITC is designed to be excited by the Blue laser (488 nm) and detected using an optical filter centered near 530 nm (e.g., a 525/40 nm bandpass filter).
Storage Buffer	Phosphate buffered solution, pH 7.2, containing 0.09% sodium azide and 1% BSA.

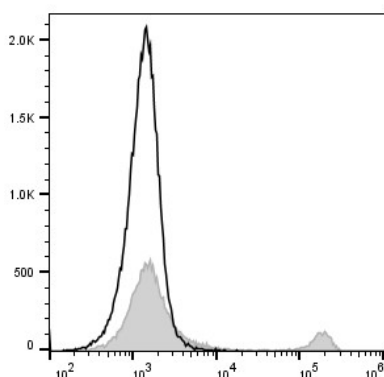
Applications

Recommended usage

FCM

Each lot of this antibody is quality control tested by flow cytometric analysis. **The amount of the reagent is suggested to be used 5 μ L of antibody per test (million cells in 100 μ L staining volume or per 100 μ L of whole blood).** Please check your vial before the experiment. Since applications vary, the appropriate dilutions must be determined for individual use.

Data



Staining of C57BL/6 murine splenocytes with FITC Anti-Mouse CD8a Antibody[53-6.7] (filled gray histogram) or FITC Rat IgG2a, κ Isotype Control (empty black histogram). Total viable cells were used for analysis.

Preparation & Storage

Storage	Keep as concentrated solution. This product can be stored at 2-8°C for 12 months. Please protected from prolonged exposure to light and do not freeze.
Shipping	Ice bag

Antigen Information

Alternate Names	CD8A;MAL;T-cell surface glycoprotein CD8 alpha chain;T-lymphocyte differentiation antigen T8/Leu-2
Uniprot ID	P01731
Gene ID	12525

For Research Use Only

Background

CD8, also known as Lyt-2, Ly-2, or T8, consists of disulfide-linked α and β chains that form the α (CD8a)/ β (CD8b) heterodimer and α/α homodimer. CD8a is a 34 kD protein that belongs to the immunoglobulin family. The CD8 α/β heterodimer is expressed on the surface of most thymocytes and a subset of mature TCR α/β T cells. CD8 expression on mature T cells is non-overlapping with CD4. The CD8 α/α homodimer is expressed on a subset of γ/δ TCR-bearing T cells, NK cells, intestinal intraepithelial lymphocytes, and lymphoid dendritic cells. CD8 is an antigen co-receptor on T cells that interacts with MHC class I on antigen-presenting cells or epithelial cells. CD8 promotes T cell activation through its association with the TCR complex and protein tyrosine kinase lck.