

SRPK1 Monoclonal Antibody

catalog number: AN200125P

Note: Centrifuge before opening to ensure complete recovery of vial contents.

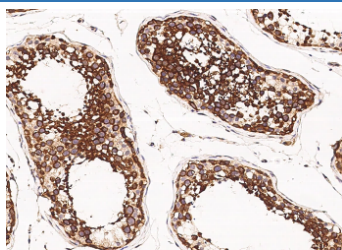
Description

Reactivity	Human
Immunogen	Recombinant Human SRPK1 Protein
Host	Mouse
Isotype	IgG1
Clone	10A3
Purification	Protein A
Buffer	0.2 µm filtered solution in PBS

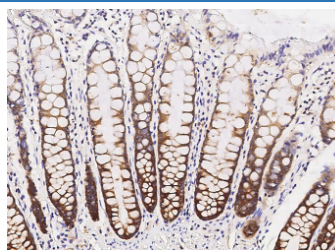
Applications Recommended Dilution

IHC-P	1:50-1:200
--------------	------------

Data



Immunohistochemistry of paraffin-embedded human testis using SRPK1 Monoclonal Antibody at dilution of 1:60.



Immunohistochemistry of paraffin-embedded human rectum using SRPK1 Monoclonal Antibody at dilution of 1:60.

Preparation & Storage

Storage	This antibody can be stored at 2°C-8°C for one month without detectable loss of activity. Antibody products are stable for twelve months from date of receipt when stored at -20°C to -80°C. Preservative-Free. Avoid repeated freeze-thaw cycles.
Shipping	Ice bag

Background

This gene encodes a serine/arginine protein kinase specific for the SR (serine/arginine-rich domain) family of splicing factors. The protein localizes to the nucleus and the cytoplasm. It is thought to play a role in regulation of both constitutive and alternative splicing by regulating intracellular localization of splicing factors. Alternative splicing of this gene results in multiple transcript variants. Additional alternatively spliced transcript variants have been described for this gene, but their full length nature have not been determined.

For Research Use Only