

NPAP1 Polyclonal Antibody

catalog number: E-AB-13029

Note: Centrifuge before opening to ensure complete recovery of vial contents.

Description

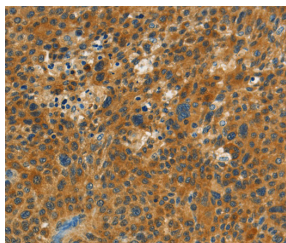
Reactivity	Human
Immunogen	Synthetic peptide of human NPAP1
Host	Rabbit
Isotype	IgG
Purification	Affinity purification
Conjugation	Unconjugated
Buffer	Phosphate buffered solution, pH 7.4, containing 0.05% stabilizer and 50% glycerol.

Applications

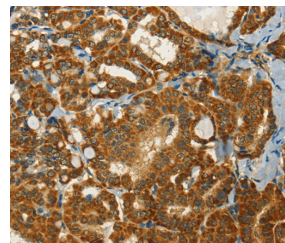
Recommended Dilution

IHC	1:50-1:200
------------	------------

Data



Immunohistochemistry of paraffin-embedded Human liver cancer tissue using NPAP1 Polyclonal Antibody at dilution 1:60



Immunohistochemistry of paraffin-embedded Human thyroid cancer tissue using NPAP1 Polyclonal Antibody at dilution 1:60

Preparation & Storage

Storage	Store at -20°C Valid for 12 months. Avoid freeze / thaw cycles.
Shipping	The product is shipped with ice pack, upon receipt, store it immediately at the temperature recommended.

Background

This gene is located in the Prader-Willi syndrome region on chromosome 15. This gene is biallelically expressed in adult testis and brain but is paternally imprinted in fetal brain. Defects in this gene may be associated with Prader-Willi syndrome.