

SOD2 Polyclonal Antibody

catalog number: AN006910L

Note: Centrifuge before opening to ensure complete recovery of vial contents.

Description

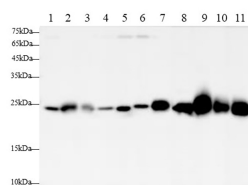
| | |
|---------------------|--|
| Reactivity | Human;Mouse;Rat |
| Immunogen | Recombinant Rat SOD2 protein expressed by E.coli |
| Host | Rabbit |
| Isotype | IgG |
| Purification | Antigen Affinity Purification |
| Conjugation | Unconjugated |
| buffer | PBS with 0.05% proclin 300, 1% protective protein and 50% glycerol,pH7.4 |

Applications

Recommended Dilution

| | |
|-----------|---------------|
| WB | 1:1000-1:2000 |
|-----------|---------------|

Data



Western blot with Anti SOD2 Polyclonal antibody at dilution of 1:1000. Lane 1: SH-SY5Y cell lysate, Lane 2: HeLa cell lysate, Lane 3: Hep G2 cell lysate, Lane 4: HL60 cell lysate, Lane 5: 293T cell lysate, Lane 6: NIH/3T3 cell lysate, Lane 7: Raw264.7 cell lysate, Lane 8: Mouse brain tissue lysate, Lane 9: Mouse heart tissue lysate, Lane 10: Rat brain tissue lysate, Lane 11: Rat heart tissue lysate.

Observed-MV:25 kDa

Calculated-MV:25 kDa

Preparation & Storage

| | |
|-----------------|--|
| Storage | Store at -20°C Valid for 12 months. Avoid freeze / thaw cycles. |
| Shipping | The product is shipped with ice pack, upon receipt, store it immediately at the temperature recommended. |

Background

SOD2(superoxide dismutase 2, mitochondrial) is also named as IPOB, MNSOD, SODM, Mn-SOD and belongs to the iron/manganese superoxide dismutase family. It is a marker of mitochondria, which is restricted to the perinuclear area in a cell with aggregate formation of mutant SOD1. It functions as the first line of antioxidant defense against highly reactive superoxide radicals and it appears to be early predictors for survival in septic patients with with MIF. It has 2 isoforms with the molecular weight of 25 kDa and 21 kDa.

For Research Use Only