

PPP2R3C Polyclonal Antibody

catalog number: E-AB-11497

Note: Centrifuge before opening to ensure complete recovery of vial contents.

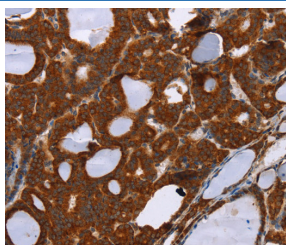
Description

Reactivity	Human;Mouse;Rat
Immunogen	Recombinant protein of human PPP2R3C
Host	Rabbit
Isotype	IgG
Purification	Affinity purification
Buffer	Phosphate buffered solution, pH 7.4, containing 0.05% stabilizer and 50% glycerol.

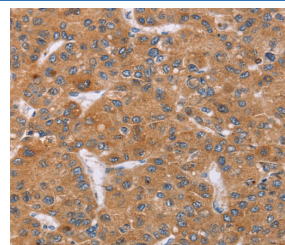
Applications Recommended Dilution

IHC	1:50-1:200
------------	------------

Data



Immunohistochemistry of paraffin-embedded Human thyroid cancer tissue using PPP2R3C Polyclonal Antibody at dilution 1:30



Immunohistochemistry of paraffin-embedded Human liver cancer tissue using PPP2R3C Polyclonal Antibody at dilution 1:30

Preparation & Storage

Storage	Store at -20°C Valid for 12 months. Avoid freeze / thaw cycles.
Shipping	The product is shipped with ice pack, upon receipt, store it immediately at the temperature recommended.

Background

Serine/threonine-protein phosphatase 2A regulatory subunit B" subunit gamma is an enzyme that in humans is encoded by the PPP2R3C gene. May regulate MCM3AP phosphorylation through phosphatase recruitment. May play a role in the activation-induced cell death of B-cells.

For Research Use Only