

## MT3 Polyclonal Antibody

**catalog number:** E-AB-15198

**Note:** Centrifuge before opening to ensure complete recovery of vial contents.

### Description

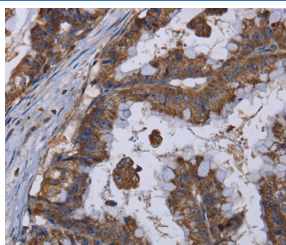
<b>Reactivity</b>	Human;Mouse;Rat
<b>Immunogen</b>	Recombinant protein of human MT3
<b>Host</b>	Rabbit
<b>Isotype</b>	IgG
<b>Purification</b>	Affinity purification
<b>Conjugation</b>	Unconjugated
<b>Buffer</b>	Phosphate buffered solution, pH 7.4, containing 0.05% stabilizer and 50% glycerol.

### Applications

### Recommended Dilution

<b>IHC</b>	1:50-1:200
------------	------------

### Data



Immunohistochemistry of paraffin-embedded Human esophagus cancer tissue using MT3 Polyclonal Antibody at dilution 1:50

### Preparation & Storage

<b>Storage</b>	Store at -20°C Valid for 12 months. Avoid freeze / thaw cycles.
<b>Shipping</b>	The product is shipped with ice pack, upon receipt, store it immediately at the temperature recommended.

### Background

Metallothionein (MT) is a sulfhydryl- and cysteine-rich protein found in micro-organisms, plants and all invertebrate and vertebrate animals. Metallothioneins are a group of ubiquitous low-molecular-weight proteins that have functional roles in cell growth, repair and differentiation. Metallothionein are implicated primarily in metal ion detoxification as they are essential for the protection of cells against the toxicity of cadmium, mercury and copper. Metallothioneins are known to be broadly expressed in heart, liver, kidney, breast and testis tissue. Metallothionein 3, also known as MT-3 or GIFB (growth inhibitory factor), is a 68 amino acid protein that belongs to the type 1 family and Metallothionein superfamily. While highly expressed in astrocytes of the normal human brain, Metallothionein 3 expression is reduced in the brains of patients with Alzheimer disease.

### For Research Use Only