

## CCL25 Polyclonal Antibody

**catalog number: AN006870L**

**Note:** Centrifuge before opening to ensure complete recovery of vial contents.

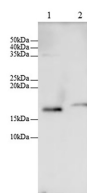
### Description

<b>Reactivity</b>	Mouse;Rat
<b>Immunogen</b>	Recombinant Mouse CCL25 protein expressed by E.coli
<b>Host</b>	Rabbit
<b>Isotype</b>	IgG
<b>Purification</b>	Antigen Affinity Purification
<b>Buffer</b>	PBS with 0.05% Proclin300, 1% protective protein and 50% glycerol, pH7.4

### Applications

<b>WB</b>	1:1000-1:2000
-----------	---------------

### Data



Western blot with Anti CCL25 Polyclonal antibody at dilution of 1:1000. Lane 1: Mouse thymus tissue lysate, Lane 2: Rat thymus tissue lysate.

**Observed-MW:17 kDa**

**Calculated-MW:17 kDa**

### Preparation & Storage

<b>Storage</b>	Store at -20°C Valid for 12 months. Avoid freeze / thaw cycles.
<b>Shipping</b>	The product is shipped with ice pack, upon receipt, store it immediately at the temperature recommended.

### Background

CCL25 (thymus-expressed chemokine) is a novel CC chemokine that is distantly related to other CC chemokines. Mouse CCL25 cDNA encodes a 144 amino acid residue precursor protein with a 23 amino acid residue signal peptide that is cleaved to yield a 121 residue mature protein. Human CCL25 cDNA has also been cloned and shown to encode a 151 amino acid protein that exhibits 49% amino acid sequence identity to mouse CCL25. The expression of human and mouse CCL25 was shown to be highly restricted to the thymus and small intestine. Although dendritic cells have been demonstrated to be the source of CCL25 production in the thymus, dendritic cells derived from bone marrow do not express CCL25. The gene for mouse CCL25 has been mapped to chromosome 8 rather than chromosome 11 where many mouse CC chemokines are clustered. Recombinant mouse CCL25 has been shown to be chemotactic for activated macrophages, dendritic cells and thymocytes.

### For Research Use Only