

SAA4 Polyclonal Antibody

Catalog Number:E-AB-52210



Note: Centrifuge before opening to ensure complete recovery of vial contents.

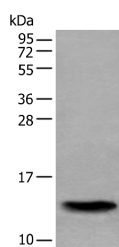
Description

Reactivity	Human
Immunogen	Full length fusion protein
Host	Rabbit
Isotype	IgG
Purification	Antigen affinity purification
Conjugation	Unconjugated
Formulation	PBS with 0.05% NaN ₃ and 40% Glycerol,pH7.4

Applications Recommended Dilution

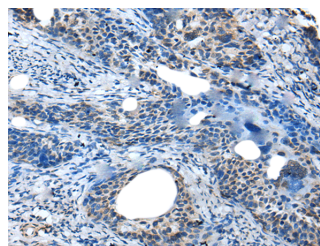
WB	1:500-1:2000
IHC	1:25-1:100
ELISA	1:5000-1:10000

Data



Western blot analysis of Human normal stomach tissue lysate using SAA4 Polyclonal Antibody at dilution of 1:350

Observed Mw:Refer to figures
Calculated Mw:15 kDa



Immunohistochemistry of paraffin-embedded Human cervical cancer tissue using SAA4 Polyclonal Antibody at dilution of 1:35(×200)

Preparation & Storage

Storage Store at -20°C. Avoid freeze / thaw cycles.

Background

SAA4 (Serum Amyloid A4, Constitutive) is a Protein Coding gene. Diseases associated with SAA4 include Unicentric Castleman Disease and Amyloidosis Aa. Among its related pathways are Folate Metabolism. Gene Ontology (GO) annotations related to this gene include chemoattractant activity. An important paralog of this gene is SAA2-SAA4.

For Research Use Only

A Reliable Research Partner in Life Science and Medicine

Toll-free: 1-888-852-8623

Web: www.elabscience.com

Tel: 1-832-243-6086

Email: techsupport@elabscience.com

Fax: 1-832-243-6017