

# Recombinant Mouse Kallikrein 7/KLK7 Protein (His Tag)

Catalog Number: PKSM041198



**Note:** Centrifuge before opening to ensure complete recovery of vial contents.

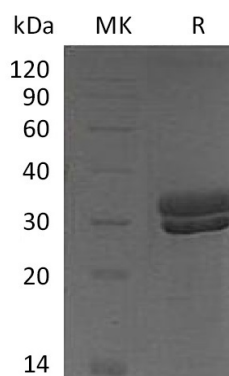
## Description

<b>Species</b>	Mouse
<b>Mol_Mass</b>	26.1 kDa
<b>Accession</b>	Q91VE3
<b>Bio-activity</b>	Not validated for activity

## Properties

<b>Purity</b>	> 95 % as determined by reducing SDS-PAGE.
<b>Endotoxin</b>	< 1.0 EU per µg of the protein as determined by the LAL method.
<b>Storage</b>	Generally, lyophilized proteins are stable for up to 12 months when stored at -20 to -80 °C. Reconstituted protein solution can be stored at 4-8°C for 2-7 days. Aliquots of reconstituted samples are stable at < -20°C for 3 months.
<b>Shipping</b>	This product is provided as lyophilized powder which is shipped with ice packs.
<b>Formulation</b>	Lyophilized from a 0.2 µm filtered solution of 20mM HEPES, 150mM NaCl, pH 7.4. Normally 5% - 8% trehalose, mannitol and 0.01% Tween 80 are added as protectants before lyophilization. Please refer to the specific buffer information in the printed manual.
<b>Reconstitution</b>	Please refer to the printed manual for detailed information.

## Data



## Background

Kallikrein7, also named as stratum corneum chymotryptic enzyme (SCCE), is a secreted protein of the Kallikrein-related peptidase (KLK) family. This family contains fifteen homologous secreted serine endopeptidases and plays a significant role in various physiological processes, including skin desquamation, semen liquefaction, neural plasticity, and body fluid homeostasis. In skin KLK5, KLK 7 and KLK14 are able to degrade comeodesmosomes, which leads to desquamation of skin surface cells. KLK activation is believed to be mediated through highly organized proteolytic cascades, regulated through a series of feedback loops, inhibitors, auto-degradation and internal cleavages. Studies have shown that one potential physiological activator for KLK7 is KLK5. Along with KLK14, these three kallikreins form a proteolytic cascade in the stratum corneum. KLK7 is primarily expressed in the skin but is also detected at relatively high levels in esophagus, heart, liver, central nervous system, kidney, pancreas, mammary and salivary glands.

## For Research Use Only

A Reliable Research Partner in Life Science and Medicine  
Tel:400-999-2100

Email:[techsupport@elabscience.cn](mailto:techsupport@elabscience.cn)

Web:[www.elabscience.cn](http://www.elabscience.cn)

Rev. V3.5