

## FITC Anti-Human CD8a Antibody[HIT8a]

**Catalog Number:** E-AB-F1271C

**Note:** Centrifuge before opening to ensure complete recovery of vial contents.

### Description

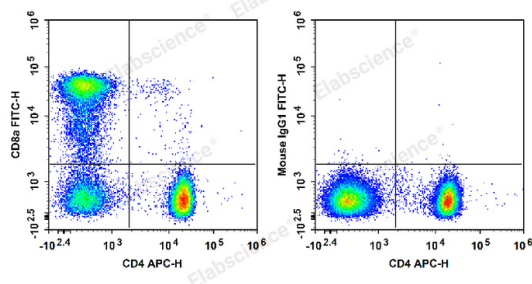
<b>Reactivity</b>	Human
<b>Host</b>	Mouse
<b>Isotype</b>	Mouse IgG1, $\kappa$
<b>Clone No.</b>	HIT8a
<b>Isotype Control</b>	FITC Mouse IgG1, $\kappa$ Isotype Control[MOPC-21] [Product E-AB-F09792C]
<b>Conjugation</b>	FITC
<b>Conjugation Information</b>	FITC is designed to be excited by the Blue laser (488 nm) and detected using an optical filter centered near 530 nm (e.g., a 525/40 nm bandpass filter).
<b>Storage Buffer</b>	Phosphate buffered solution, pH 7.2, containing 0.09% stabilizer and 1% protein protectant.

### Applications

### Recommended usage

<b>FCM</b>	Each lot of this antibody is quality control tested by flow cytometric analysis. <b>The amount of the reagent is suggested to be used 5 <math>\mu</math>L of antibody per test (million cells in 100 <math>\mu</math>L staining volume or per 100 <math>\mu</math>L of whole blood).</b> Please check your vial before the experiment. Since applications vary, the appropriate dilutions must be determined for individual use.
------------	--

### Data



Human peripheral blood lymphocytes are stained with APC Anti-Human CD4 Antibody and FITC Anti-Human CD8a Antibody (Left). Lymphocytes are stained with APC Anti-Human CD4 Antibody and FITC Mouse IgG1,  $\kappa$  Isotype Control (Right).

### Preparation & Storage

<b>Storage</b>	Keep as concentrated solution. This product can be stored at 2-8°C for 12 months. Please protected from prolonged exposure to light and do not freeze.
<b>Shipping</b>	Ice bag

### Antigen Information

### For Research Use Only

<b>Alternate Names</b>	CD8Leu-2Ly-2;CD8;CD8 antigen alpha po;CD8 antigen alpha polypeptide;CD8A;Leu; Leu2;MAL;T-cell surface glycoprotein CD8 alpha chain;T-lymphocyte differentiation antigen T8/Leu;T-lymphocyte differentiation antigen T8/Leu-2;T8;alpha polypeptide (p32);p32
<b>Uniprot ID</b>	P01732
<b>Gene ID</b>	925
<b>Background</b>	CD8a is a 32-34 kD type I glycoprotein. It forms a homodimer (CD8a/a) or heterodimer (CD8a/b) with CD8b. CD8, also known as T8 and Leu2, is a member of the immunoglobulin superfamily found on the majority of thymocytes, a subset of peripheral blood T cells, and NK cells (which express almost exclusively CD8a homodimers). CD8 acts as a co-receptor with MHC class I-restricted T cell receptors in antigen recognition and T cell activation and has been shown to play a role in thymic differentiation. Two domains in CD8a are important for function: the extracellular IgSF domain binds the $\alpha 3$ domain of MHC class I and the cytoplasmic CXCP motif binds the tyrosine kinase p56 Lck.

## For Research Use Only