

## IGF-II/IGF2, Human, Recombinant

Cat. No. : PCK155

### 产品信息

别名	Insulin-Like Growth Factor II;IGF-II;Somatomedin-A;IGF2;PP1446
物种	Human
表达宿主	E.coli
序列信息	Ala25-Glu91
检索号	P01344
分子量	8.9 kDa
有效期	12 months

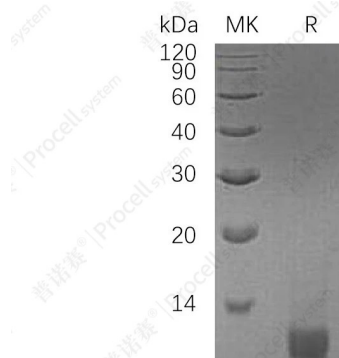
### 产品特性

内毒素	< 1.0 EU per 1 µg as determined by LAL test.
保存	Lyophilized protein should be stored at -5~-20°C, stable for one year after receipt. Reconstituted protein solution can be stored at 2-8°C for 2-7 days. Aliquots of reconstituted samples are stable at -5~-20°C for 3 months.
运输	Ambient temperature or ice pack.
制剂	Lyophilized from a 0.2 µm filtered solution of 20 mM Glycine-HCl, 4% Sucrose, 4% Mannitol, 0.02% Tween 80 (w/v), pH 3.0.
复溶	Always centrifuge tubes before opening. Do not mix by vortex or pipetting. It is not recommended to reconstitute to a concentration less than 100 µg/mL. Dissolve the lyophilized protein in sterile water. Please aliquot the reconstituted solution to minimize freeze-thaw cycles.

### 背景介绍

Insulin-Like Growth Factor II (IGF2) belongs to the Insulin family of polypeptide Growth Factors that is involved in development and growth. Members of this family are structurally homologous to proInsulin, and share higher sequence identity. IGF2 is expressed only from the paternally inherited allele and believed to be secreted by the liver and to circulate in the blood. IGF2 possess growth-promoting activity and can stimulate the proliferation and survival of various cell types including muscle, bone, and cartilage tissue in vitro. IGF2 is influenced by placental lactogen and may play a role in fetal development.

### SDS-PAGE

网站: [www.procell.com.cn](http://www.procell.com.cn)

电话: 400-999-2100

邮箱: [techsupport@procell.com.cn](mailto:techsupport@procell.com.cn)

地址: 湖北省武汉市高新大道858号生物医药产业园三期C4栋

