

## NDUFA12 Polyclonal Antibody

catalog number: E-AB-18397

**Note:** Centrifuge before opening to ensure complete recovery of vial contents.

### Description

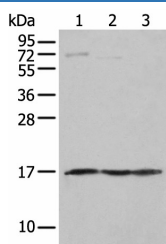
<b>Reactivity</b>	Human;Mouse
<b>Immunogen</b>	Full length fusion protein
<b>Host</b>	Rabbit
<b>Isotype</b>	IgG
<b>Purification</b>	Antigen affinity purification
<b>Conjugation</b>	Unconjugated
<b>Buffer</b>	Phosphate buffered solution, pH 7.4, containing 0.05% stabilizer and 50% glycerol.

### Applications

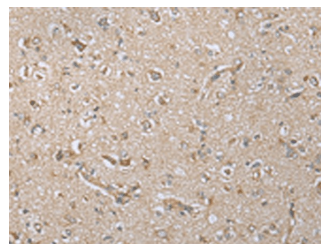
### Recommended Dilution

<b>WB</b>	1:500-1:2000
<b>IHC</b>	1:25-1:100

### Data



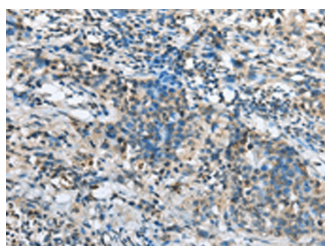
Western blot analysis of Human fetal muscle tissue PC-3 and Jurkat cell using NDUFA12 Polyclonal Antibody at dilution of 1:300



Immunohistochemistry of paraffin-embedded Human brain tissue using NDUFA12 Polyclonal Antibody at dilution of 1:30(×200)

**Observed-MW:Refer to figures**

**Calculated-MW:17 kDa**



Immunohistochemistry of paraffin-embedded Human lung cancer tissue using NDUFA12 Polyclonal Antibody at dilution of 1:30(×200)

### Preparation & Storage

<b>Storage</b>	Store at -20°C Valid for 12 months. Avoid freeze / thaw cycles.
<b>Shipping</b>	The product is shipped with ice pack,upon receipt,store it immediately at the temperature recommended.

### Background

### For Research Use Only

This gene encodes a protein which is part of mitochondrial complex I, part of the oxidative phosphorylation system in mitochondria. Complex I transfers electrons to ubiquinone from NADH which establishes a proton gradient for the generation of ATP. Mutations in this gene are associated with Leigh syndrome due to mitochondrial complex I deficiency. Pseudogenes of this gene are located on chromosomes 5 and 13. Alternative splicing results in multiple transcript variants.