

## Lbp Polyclonal Antibody

**catalog number: D-AB-10445L**

**Note:** Centrifuge before opening to ensure complete recovery of vial contents.

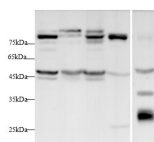
### Description

<b>Reactivity</b>	Human;Mouse;Rat
<b>Immunogen</b>	Recombinant Human Lbp protein expressed by Mammalian
<b>Host</b>	Rabbit
<b>Isotype</b>	IgG
<b>Purification</b>	Antigen Affinity Purification
<b>Buffer</b>	PBS with 0.05% Proclin300, 1% protective protein and 50% glycerol, pH7.4

### Applications Recommended Dilution

<b>WB</b>	1:500-1:1000
-----------	--------------

### Data



Western blot with Lbp Polyclonal antibody at dilution of 1:1000. lane 1: A431 whole cell lysate, lane 2: HEK-293T whole cell lysate, lane 3: HepG2 whole cell lysate, lane 4: Mouse liver, lane 5: Rat serum

**Observed-MW: 55 kDa**

**Calculated-MW: 54 kDa**

### Preparation & Storage

<b>Storage</b>	Store at -20°C Valid for 12 months. Avoid freeze / thaw cycles.
<b>Shipping</b>	The product is shipped with ice pack, upon receipt, store it immediately at the temperature recommended.

### Background

Lipopolysaccharide-binding protein (LBP), a 58 kDa glycoprotein synthesized in hepatocytes, belongs to a family of lipid-binding proteins that includes bactericidal/permeability increasing protein (BPI), phospholipid ester transfer protein (PLTP), and cholesterol ester transfer protein (CETP). LBP binds to the lipid A portion of lipopolysaccharide (LPS) to facilitate the process of LPS monomerization, catalyzes the binding of LPS monomers to CD14, and promotes LPS-induced immune response.

### For Research Use Only