

## PTPN12 Polyclonal Antibody

**catalog number: E-AB-13541**

**Note:** Centrifuge before opening to ensure complete recovery of vial contents.

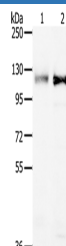
### Description

<b>Reactivity</b>	Human;Mouse
<b>Immunogen</b>	Synthetic peptide of human PTPN12
<b>Host</b>	Rabbit
<b>Isotype</b>	IgG
<b>Purification</b>	Affinity purification
<b>Buffer</b>	Phosphate buffered solution, pH 7.4, containing 0.05% stabilizer and 50% glycerol.

### Applications

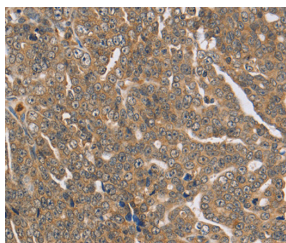
Applications	Recommended Dilution
<b>WB</b>	1:200-1:1000
<b>IHC</b>	1:100-1:300

### Data

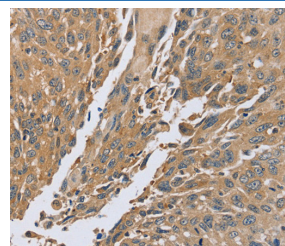


Western Blot analysis of 231 and K562 cell using PTPN12 Polyclonal Antibody at dilution of 1:200

**Calculated-MW:88 kDa**



Immunohistochemistry of paraffin-embedded Human cervical cancer using PTPN12 Polyclonal Antibody at dilution of 1:45



Immunohistochemistry of paraffin-embedded Human lung cancer using PTPN12 Polyclonal Antibody at dilution of 1:45

### Preparation & Storage

<b>Storage</b>	Store at -20°C Valid for 12 months. Avoid freeze / thaw cycles.
<b>Shipping</b>	The product is shipped with ice pack, upon receipt, store it immediately at the temperature recommended.

### Background

The protein encoded by this gene is a member of the protein tyrosine phosphatase (PTP) family. PTPs are signaling molecules that regulate a variety of cellular processes including cell growth, differentiation, mitotic cycle, and oncogenic transformation. This PTP contains a C-terminal PEST motif, which serves as a protein-protein interaction domain, and may regulate protein intracellular half-life. This PTP was found to bind and dephosphorylate the product of the oncogene c-ABL and thus may play a role in oncogenesis.

### For Research Use Only