

PLXNB1 Polyclonal Antibody

catalog number: **E-AB-90035**

Note: Centrifuge before opening to ensure complete recovery of vial contents.

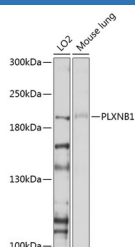
Description

Reactivity	Human;Mouse
Immunogen	Recombinant fusion protein of human PLXNB1
Host	Rabbit
Isotype	IgG
Purification	Affinity purification
Buffer	Phosphate buffered solution, pH 7.4, containing 0.05% stabilizer and 50% glycerol.

Applications

WB	1:500-1:2000
-----------	--------------

Data



Western blot analysis of extracts of various cell lines using PLXNB1 Polyclonal Antibody at 1:1000 dilution.

Observed-MV:232 kDa

Calculated-MV:78 kDa/214 kDa/232 kDa

Preparation & Storage

Storage	Store at -20°C Valid for 12 months. Avoid freeze / thaw cycles.
Shipping	The product is shipped with ice pack, upon receipt, store it immediately at the temperature recommended.

Background

Receptor for SEMA4D. Plays a role in GABAergic synapse development (By similarity. Mediates SEMA4A- and SEMA4D-dependent inhibitory synapse development (By similarity. Plays a role in RHOA activation and subsequent changes of the actin cytoskeleton. Plays a role in axon guidance, invasive growth and cell migration.

For Research Use Only