

Note: Centrifuge before opening to ensure complete recovery of vial contents.

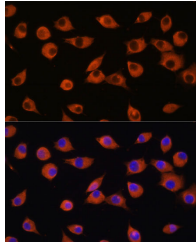
Description

Reactivity	Human, Mouse, Rat
Immunogen	Recombinant fusion protein of human DNER (NP_620711.3).
Host	Rabbit
Isotype	IgG
Purification	Affinity purification
Conjugation	Unconjugated
Formulation	PBS with 0.02% sodium azide, 50% glycerol, pH7.3.

Applications Recommended Dilution

IF	1:50-1:200
-----------	------------

Data



Immunofluorescence analysis of L929 cells using DNER Polyclonal Antibody at dilution of 1:100. Blue: DAPI for nuclear staining.

Preparation & Storage

Storage Store at -20°C. Avoid freeze / thaw cycles.

Background

DNER (Delta/Notch Like EGF Repeat Containing) is a Protein Coding gene. Diseases associated with DNER include Impulse Control Disorder and Kleptomania. Among its related pathways are Signaling by GPCR and Notch Signaling Pathway (WikiPathways). Gene Ontology (GO) annotations related to this gene include calcium ion binding and clathrin binding. An important paralog of this gene is NOTCH4.

For Research Use Only

A Reliable Research Partner in Life Science and Medicine

Toll-free: 1-888-852-8623

Web: www.elabscience.com

Tel: 1-832-243-6086

Email: techsupport@elabscience.com

Fax: 1-832-243-6017