

MLKL Polyclonal Antibody

catalog number: E-AB-18957

Note: Centrifuge before opening to ensure complete recovery of vial contents.

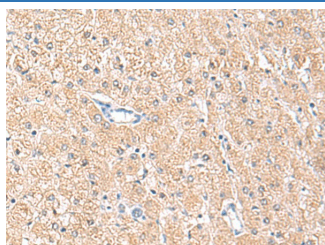
Description

Reactivity	Human
Immunogen	Fusion protein of human MLKL
Host	Rabbit
Isotype	IgG
Purification	Antigen affinity purification
Conjugation	Unconjugated
buffer	Phosphate buffered solution, pH 7.4, containing 0.05% stabilizer and 50% glycerol.

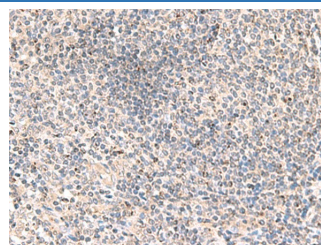
Applications

Applications	Recommended Dilution
IHC	1:50-1:300

Data



Immunohistochemistry of paraffin-embedded Human liver cancer tissue using MLKL Polyclonal Antibody at dilution of 1:85(×200)



Immunohistochemistry of paraffin-embedded Human tonsil tissue using MLKL Polyclonal Antibody at dilution of 1:85(×200)

Preparation & Storage

Storage	Store at -20°C Valid for 12 months. Avoid freeze / thaw cycles.
Shipping	The product is shipped with ice pack, upon receipt, store it immediately at the temperature recommended.

Background

This gene belongs to the protein kinase superfamily. The encoded protein contains a protein kinase-like domain; however, is thought to be inactive because it lacks several residues required for activity. This protein plays a critical role in tumor necrosis factor (TNF)-induced necroptosis, a programmed cell death process, via interaction with receptor-interacting protein 3 (RIP3), which is a key signaling molecule in necroptosis pathway. Inhibitor studies and knockdown of this gene inhibited TNF-induced necrosis. High levels of this protein and RIP3 are associated with inflammatory bowel disease in children. Alternatively spliced transcript variants have been described for this gene. MLKL (Mixed Lineage Kinase Domain Like Pseudokinase) is a Protein Coding gene. Among its related pathways are Apoptosis and Autophagy and CDK-mediated phosphorylation and removal of Cdc6. GO annotations related to this gene include transferase activity, transferring phosphorus-containing groups and protein tyrosine kinase activity.

For Research Use Only