

MT-CO2 Polyclonal Antibody

catalog number: E-AB-53240

Note: Centrifuge before opening to ensure complete recovery of vial contents.

Description

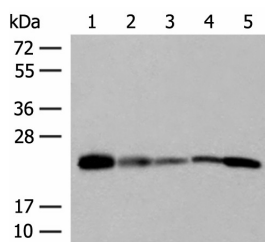
Reactivity	Human
Immunogen	Synthetic peptide of human MT-CO2
Host	Rabbit
Isotype	IgG
Purification	Antigen affinity purification
Conjugation	Unconjugated
Buffer	Phosphate buffered solution, pH 7.4, containing 0.05% stabilizer and 50% glycerol.

Applications

Recommended Dilution

WB	1:500-1:2000
IHC	1:50-1:300

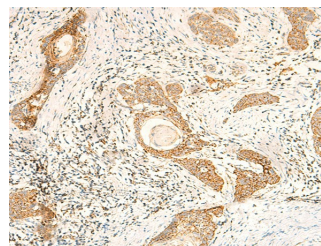
Data



Western blot analysis of 293T 231 HUVEC HeLa and A549 cell lysates using MT-CO2 Polyclonal Antibody at dilution of 1:400

Observed-MW: Refer to figures

Calculated-MW: 26 kDa



Immunohistochemistry of paraffin-embedded Human esophagus cancer tissue using MT-CO2 Polyclonal Antibody at dilution of 1:60 (×200)

Preparation & Storage

Storage	Store at -20°C Valid for 12 months. Avoid freeze / thaw cycles.
Shipping	The product is shipped with ice pack, upon receipt, store it immediately at the temperature recommended.

Background

Cytochrome c oxidase is the component of the respiratory chain that catalyzes the reduction of oxygen to water. Subunits 1-3 form the functional core of the enzyme complex. Subunit 2 transfers the electrons from cytochrome c via its binuclear copper A center to the bimetallic center of the catalytic subunit 1.