

Recombinant SP1 Monoclonal Antibody

catalog number: **AN301087L**

Note: Centrifuge before opening to ensure complete recovery of vial contents.

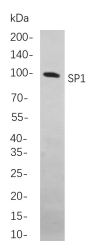
Description

Reactivity	Human
Immunogen	Recombinant Human SP1 protein
Host	Rabbit
Isotype	IgG, κ
Clone	B842
Purification	Protein A
Buffer	PBS, 50% glycerol, 0.05% Proclin 300, 0.05% protein protectant.

Applications

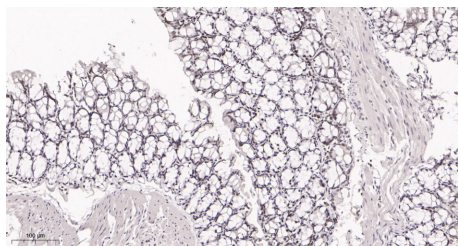
Applications	Recommended Dilution
IHC	1:200-1000
WB	1:1000-5000

Data

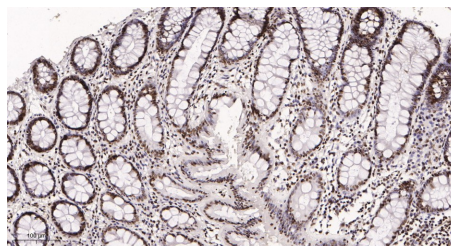


Western Blot with Recombinant SP1 Monoclonal Antibody at dilution of 1:1000. Lane A: Caco-2 cells.

Observed-MW:100 kDa
Calculated-MW:100 kDa



Immunohistochemistry of paraffin-embedded mouse colon tissue using Recombinant SP1 Monoclonal Antibody at dilution of 1:200.



Immunohistochemistry of paraffin-embedded human colon tissue using Recombinant SP1 Monoclonal Antibody at dilution of 1:200.

Preparation & Storage

Storage	Store at -20°C Valid for 12 months. Avoid freeze / thaw cycles.
Shipping	Ice bag

Background

For Research Use Only

Toll-free: 1-888-852-8623
Web: www.elabscience.com

Tel: 1-832-243-6086
Email: techsupport@elabscience.com

Fax: 1-832-243-6017

Rev. V1.1

The protein encoded by this gene is a zinc finger transcription factor that binds to GC-rich motifs of many promoters. The encoded protein is involved in many cellular processes, including cell differentiation, cell growth, apoptosis, immune responses, response to DNA damage, and chromatin remodeling. Post-translational modifications such as phosphorylation, acetylation, glycosylation, and proteolytic processing significantly affect the activity of this protein, which can be an activator or a repressor. Three transcript variants encoding different isoforms have been found for this gene.